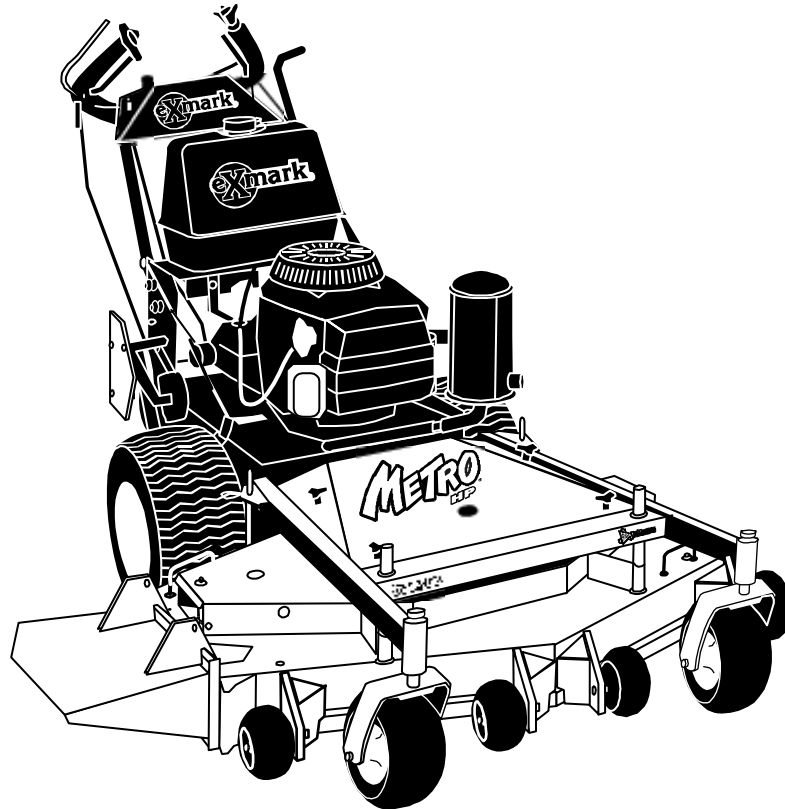


For Serial Nos.  
510,000 & Higher



PARTS MANUAL

# METRO<sup>®</sup> HP

**CONGRATULATIONS** on the purchase of your new Exmark mower. This product has been carefully designed and manufactured to give you a maximum amount of dependability and years of trouble-free operation. If additional information is needed, or should you require trained mechanic service, contact your authorized Exmark equipment dealer or distributor. If you need to order replacement parts from your dealer, always give the model number and serial number of your mower as well as the part number, description and quantity of the part needed.

The Serial No. plate is located next to the fuel tank on the top left hand side of the fuel tank support. For ease of ordering and reference, we suggest that you record the information requested in the following identification table.

Place Model No. and Serial No. Label Here (Included in Literature Pack) or Fill in Below
Model No. _____
Serial No. _____

Engine Model No. and Spec. No. (Code) \_\_\_\_\_

Engine Serial No. (E/No) \_\_\_\_\_

Date Purchased \_\_\_\_\_

# EXMARK PARTS PLUS® PROGRAM

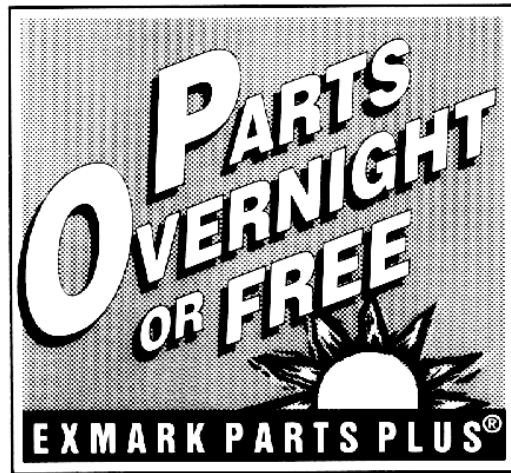
EFFECTIVE DATE: September 1, 1995

## Program

If your Exmark dealer does not have the Exmark part in stock, Exmark will get the parts to the dealer the next business day or the part will be FREE\* Guaranteed!!

## *How the Program Works*

1. If dealer does not have part in stock for a "down" unit at the time of request by customer, the dealer contacts his distributor by 1:00 p.m., local time, and requests Exmark Parts Plus® shipment of six (6) line items or less.
2. Distributor ships part(s) to dealer or customer, as requested by dealer, same day, overnight UPS  
Distributor bills dealer for part and freight charges where applicable.
3. If distributor does not have the part(s) in stock to satisfy Exmark Parts Plus® order, he contacts Exmark by 3:00 p.m., central time, with an Exmark Parts Plus® order of six (6) line items or less.
4. If order is received by 3:00 p.m. central time, Exmark ships part(s) direct to dealer or customer, as requested by distributor, same day, overnight UPS Exmark bills the distributor for parts and shipping charges, where applicable.
5. The customer pays for the part and freight if it is shipped under the Exmark Parts Plus® and if it arrive in accordance to the program.
6. Who pays for the part and freight if it fails to arrive overnight in accordance to the program?
  - A. Under any circumstance the customer does not pay.
  - B. If the part does not arrive overnight due to:
    1. The dealer not submitting the Exmark Parts Plus® order to his Exmark distributor by 1:00 p.m., the dealer pays for the part and freight.
    2. The Distributor being unable to ship the part the same day or not submitting the Exmark Parts Plus® order to Exmark by 3:00 p.m., central time, the Distributor pays for the part and freight.
    3. Exmark being unable to ship the part and the Exmark parts order is received by 3:00 p.m., central time, Exmark pays for the part and freight.
    4. If the part does not arrive overnight due to the shipper (UPS), the shipper pays for the freight and Exmark pays for the part.



**The following restrictions apply** -- The Exmark Parts Plus® Program is available only through participating Exmark Dealers and applies only to orders submitted on this program Monday through Thursday. Parts Plus service is available only in the 48 contiguous United States. UPS has initiated a Saturday delivery program to many areas of the continental United States and can be requested for an overnight shipment on Friday to be delivered Saturday. The next day air charge, plus the Saturday delivery fee will be the responsibility of the purchaser. Exmark Mfg. will assume no responsibility for Saturday delivery shipments. To qualify, all Exmark Parts Plus® orders must be received by Exmark by 3:00 p.m., central time. Orders must be six (6) line items or less. Exclusions from the Exmark Parts Plus® Program are: Any wholegood or accessory in its entirety, engines and engine replacement parts, 5-speed Peerless transmissions and 5-speed transaxles, hydraulic or hydrostatic wheel motors, cutter decks and engine decks or any item exceeding United Parcel Service size and weight restrictions.

Due to UPS restrictions, aerosol spray paint is considered a hazardous material and cannot be shipped via UPS next day or Second Day Air.

Exmark Manufacturing stocks a limited supply of parts for transaxles, pumps and wheel motors. These parts can be ordered for Next Day Air shipment but will not be guaranteed per the Parts Plus Program.



**READ OPERATOR'S MANUAL BEFORE  
OPERATING OR SERVICING EXMARK EQUIPMENT.**

## **TABLE OF CONTENTS**

<b><u>Description</u></b>	<b><u>Page</u></b>
36" Mower Deck .....	3-4
48" Mower Deck .....	5-6
Decals.....	13
Engine Deck Group.....	7-10
Upper Handles & Controls, ECS .....	11-12
Wiring Diagrams .....	14

## 36" MOWER DECK

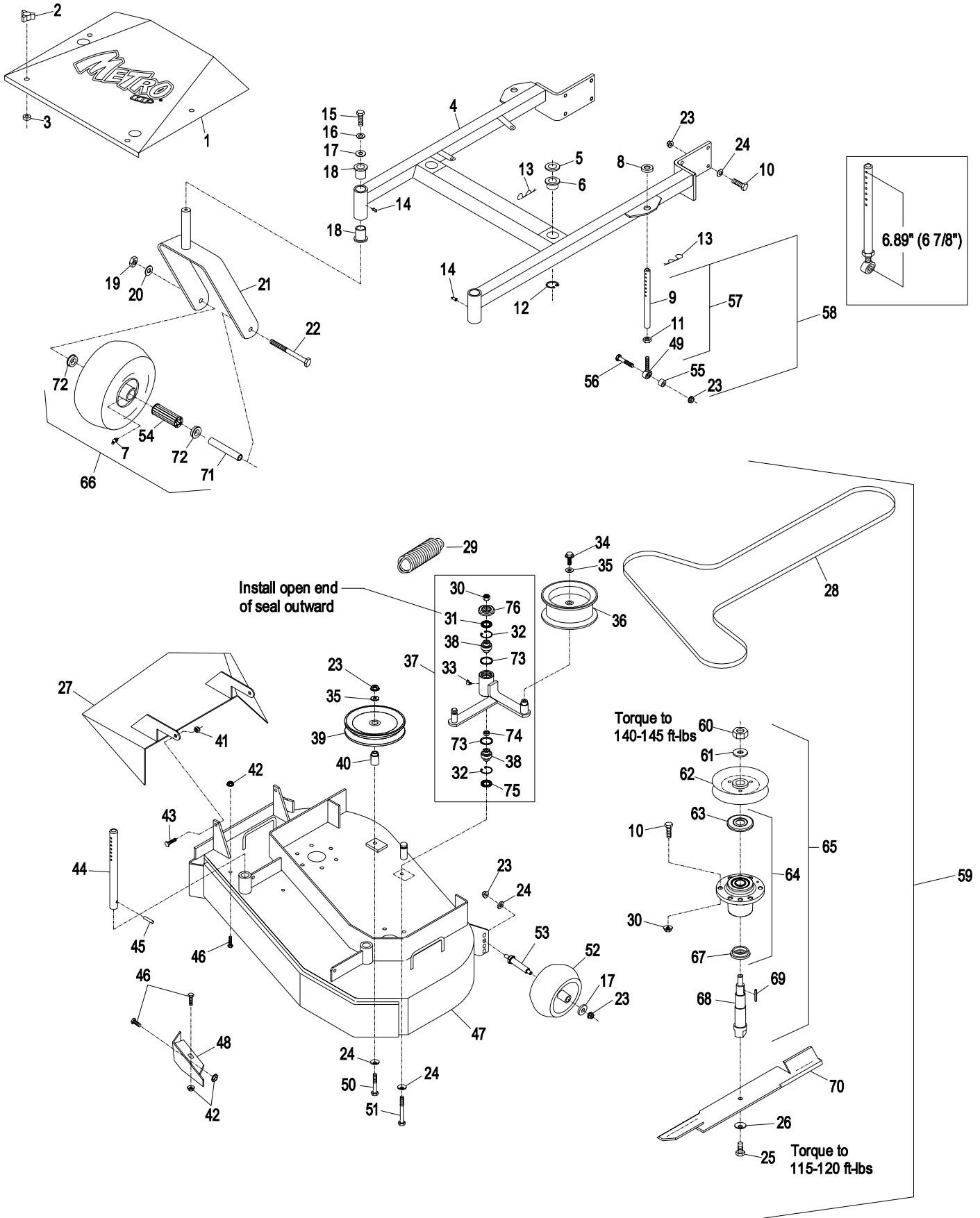
Item	Part No.	Description	Qty.
1	1-414435	Shield, Belt (1-413098-01) W/Decals .....	1
2	1-323385	Knob .....	4
3	1-323417	Washer .....	4
4	1-414309	Wld, Support (1-412108-01) W/Bushings & Decals.....	1
5	1-413425	Spacer, Front Deck Support.....	2
6	1-513336	Bushing, Deck Support .....	2
7	302-61	Zerk, 45° 1/4-28 .....	2
8	1-323539	Spacer .....	2
9	1-413525	Link, Deck Support.....	2
10	323-7	Screw, HH 3/8-16 x 1 1/4 .....	20
11	3219-3	Nut, Hex 3/8-24.....	2
12	32120-33	Ring, Retaining .....	2
13	1-806009	Hairpin, Cotter #206.....	4
14	302-52	Zerk, 1/8-27 Str.....	2
15	323-6	Screw, HH 3/8-16 x 1 .....	2
16	3253-5	Washer, Lock 3/8 Heavy .....	2
17	1-373034	Washer .....	3
18	1-303514	Bearing, Flange.....	4
19	3217-9	Nut, Hex 1/2-13.....	2
20	3253-7	Washer, Lock 1/2 .....	2
21	1-522143-01	Wld, Caster .....	2
22	325-20	Screw, HH 1/2-13 x 6.....	2
23	3290-357	Nut, Whizlock 3/8-16.....	13
24	98-5975	Washer, Spring Disk 3/8.....	11
25	103-1026	Screw, HH 5/8-11 x 1 G8 .....	2
26	1-513208	Washer, Spring Disk 5/8.....	2
27	103-2431-01	Wld, Discharge Chute .....	1
28	1-413094	Belt, Deck Drive .....	1
29	103-3330	Spring, Extension.....	1
30	3296-39	Nut, Nyloc 3/8-16 .....	13
31	103-3506	Seal, Single Lip.....	1
32	32120-10	Ring, Retaining .....	2
33	302-40	Zerk, 90° 1/4-28 .....	1
34	3234-11	Screw, HH FLG 3/8-16 x 1 .....	1
35	3256-24	Washer, 3/8 SAE .....	2
36	1-413099	Pulley, Idler .....	1
37★	103-8584	Kit, Idler Arm (103-7327-03) W/Brgs .....	1
38	103-3504	Bearing, Spherical.....	2
39	1-613098	Pulley, Idler .....	1
40	1-413113	Bushing, Idler.....	1

Item	Part No.	Description	Qty.
41	3296-29	Nut, Nyloc 5/16-18.....	2
42	32128-20	Nut, Whizlock 5/16-18.....	3
43	322-5	Screw, HH 5/16-18 x 1 .....	2
44	1-603001	Rod, Deck Support .....	2
45	1-806332	Rollpin, 1/4 x 1 1/2 .....	2
46	322-2	Screw, HH 5/16-18 x 5/8.....	3
47	1-414383	Wld, Deck (1-412104-01) W/Decals, Discharge Baffle & Support Rods.....	1
48	1-522480-01	Baffle, Discharge .....	1
49	1-613204	Balljoint.....	2
50	323-13	Screw, HH 3/8-16 x 2 3/4.....	1
51	98-5961	Screw, HH 3/8-16 x 4 Gr8 .....	1
52◆	1-603299	Roller, Antiscalp.....	1
53	99-2842	Spacer .....	1
54	1-513809	Bearing, Roller Bearing.....	2
55	1-603050	Bushing Spacer .....	2
56	323-9	Screw, HH 3/8-16x1 3/4.....	2
57★	1-414521	Link, Assembly.....	2
58	1-611216	Kit, Link Assembly .....	2
59	103-0320	Asm, Deck Complete .....	1
60*	3217-46	Nut, HH 3/4-16 Heavy.....	2
61	103-2802	Washer, Spring Disc 3/4 .....	2
62+	1-413424	Sheave W/ Hub.....	2
63+	103-1330	Guard, Bearing Top .....	2
64	103-8280	Asm, Cutter Housing W/Bearings.....	2
65▲	103-8282	Asm, Cutter Housing Complete.....	2
66	103-2171	Kit, Tire & Wheel Asm W/Spacer .....	2
67	103-2535	Spacer, Guard Bottom .....	2
68+	103-2788	Shaft, Spindle .....	2
69	1-807268	Key, Machine 1/4 x 3/16 x 1 .....	2
70	103-6584	Blade, 18.00 Notched .....	2
●	103-6582	Blade, 18.00 Mulching .....	2
	103-6580	Blade, 18.00 Low Lift .....	2
	103-1578	Blade, 18.00 Solid.....	2
	103-6337	Blade, 18.00 Extreme .....	2
71	1-513547	Spacer .....	2
72	1-513810	Bushing .....	4
73	106-7159	O-ring .....	2
74	103-5677	Spacer.....	1
75	103-3505	Seal, Double, Lip .....	1
76	103-2916	Guard, Top .....	1

Exmark red touch up spray paint - P/N 1-850337.

- ◆ Kit 103-4051 includes antiscalp roller, spacer, & mounting hardware.
- ★ Link assembly nominal length is 6.89" (or approximately 6 7/8") between center of ball joint and center of furthest hole. See diagram on next page. Initially adjust both links to this dimension, then adjust to where both links are equally supporting rear of mower deck by lengthening one link and shortening the other by an equal amount.
- ▲ Complete cutter housings also include items 25 & 26.
- Requires installation of Micro-Mulch accessory for proper mulching. Mulch kit P/N's MK363(36").
- + Apply Mobil HTS grease (P/N 103-5217 1.5 oz packet) (or a food-grade anti-sieze) between the spindles & bearings and spindles & sheaves and under top bearing guard. DO NOT use a copper or nickel based anti-sieze.
- ✘ Idler arm kit also includes items 24 & 51.
- \* Use Pro-Lock, Nut Type (P/N 1-840022, .5ml tube) on nut Item 60.

# 36" MOWER DECK



## 48" MOWER DECK

Item	Part No.	Description	Qty.
1	1-414436	Shield, Belt (1-413101-01) W/Decals .....	1
2	1-323385	Knob .....	4
3	1-323417	Washer .....	4
4	1-414310	Wld, Support (1-412110-01) W/Bushings & Decals.....	1
5	1-413425	Spacer, Front Deck Support.....	2
6	1-513336	Bushing, Deck Support .....	2
7	302-61	Zerk, 45° 1/4-28 .....	2
8	1-323539	Spacer .....	2
9	1-413525	Link, Deck Support.....	2
10	323-7	Screw, HH 3/8-16 x 1 1/4 .....	26
11	3219-3	Nut, Hex 3/8-24.....	2
12	32120-33	Ring, Retaining .....	2
13	1-806009	Hairpin, Cotter #206.....	4
14	302-52	Zerk, 1/8-27 Str.....	2
15	323-6	Screw, HH 3/8-16 x 1 .....	2
16	3253-5	Washer, Lock 3/8 Heavy .....	2
17	1-373034	Washer .....	6
18	1-303514	Bearing, Flange.....	4
19	3217-9	Nut, Hex 1/2-13.....	2
20	3253-7	Washer, Lock 1/2 .....	2
21	1-522143-01	Wld, Caster .....	2
22	325-20	Screw, HH 1/2-13 x 6.....	2
23	3290-357	Nut, Whizlock 3/8-16.....	17
24	98-5975	Washer, Spring Disk 3/8.....	15
25	103-1026	Screw, HH 5/8-11 x 1 G8 .....	3
26	1-513208	Washer, Spring Disk 5/8.....	3
27	103-2431-01	Wld, Discharge Chute .....	1
28	1-413093	Belt, Deck Drive .....	1
29	103-3330	Spring, Extension.....	1
30	3296-39	Nut, Nyloc 3/8-16 .....	19
31	103-3506	Seal, Single Lip.....	1
32	32120-10	Ring, Retaining .....	2
33	302-40	Zerk, 90° 1/4-28 .....	1
34	3234-11	Screw, HH FLG 3/8-16 x 1 .....	1
35	3256-24	Washer, 3/8 SAE .....	3
36	1-413099	Pulley, Idler .....	1
37★	103-8585	Kit, Idler Arm (103-7356-03) W/Brgs .....	1
38	103-3504	Bearing, Spherical.....	2
39	1-613098	Pulley, Idler .....	2
40	1-413113	Bushing, Idler.....	2
41	3296-29	Nut, Nyloc 5/16-18 .....	8
42	32128-20	Nut, Whizlock 5/16-18 .....	3

Item	Part No.	Description	Qty.
43	322-5	Screw, HH 5/16-18 x 1 .....	2
44	1-603001	Rod, Deck Support .....	2
45	1-806332	Rollpin, 1/4 x 1 1/2 .....	2
46	322-2	Screw, HH 5/16-18 x 5/8.....	3
47	1-414384	Wld, Deck (1-412106-01) W/Decals, Discharge Baffle & Support Rods.....	1
48	1-522480-01	Baffle, Discharge .....	1
49	1-613204	Balljoint.....	2
50	323-13	Screw, HH 3/8-16 x 2 3/4.....	2
51	98-5961	Screw, HH 3/8-16 x 4 Gr8 .....	1
52◆	1-603299	Roller, Antiscalp.....	4
53	99-2842	Spacer .....	4
54	1-513809	Bearing, Roller Bearing.....	2
55	1-603050	Bushing Spacer .....	2
56	323-9	Screw, HH 3/8-16x1 3/4.....	2
57★	1-414521	Link, Assembly.....	2
58	103-2970-01	Shield, Belt .....	2
59	3256-3	Washer, 5/16 Std.....	6
60	1-800017	Bolt, HH 5/16-18 x 3 1/4 Tap.....	2
61	1-611216	Kit, Link Assembly .....	2
62	103-0321	Asm, Deck Complete .....	1
63*	3217-46	Nut, HH 3/4-16 Heavy.....	3
64	103-2802	Washer, Spring Disc 3/4 .....	3
65+	1-413424	Sheave W/ Hub.....	3
66+	103-1330	Guard, Bearing Top .....	3
67	103-8280	Asm, Cutter Housing W/Bearings.....	2
68▲	103-8282	Asm, Cutter Housing Complete.....	2
69	103-2171	Kit, Tire & Wheel Asm W/Spacer .....	2
70	103-2535	Spacer, Guard Bottom .....	3
71+	103-2788	Shaft, Spindle .....	3
72	1-807268	Key, Machine 1/4 x 3/16 x 1 .....	3
73	103-6583	Blade, 16.25 Notched .....	3
●	103-6581	Blade, 16.25 Mulching .....	3
	103-2507	Blade, 16.25 Low Lift .....	3
	103-1577	Blade, 16.25 Solid.....	3
	103-6336	Blade, 16.25 Extreme .....	3
74	1-513547	Spacer .....	2
75	1-513810	Bushing .....	4
76	106-7159	O-ring .....	2
77	103-5677	Spacer .....	1
78	103-3505	Seal, Double, Lip .....	1
79	103-2916	Guard, Top .....	1

Exmark red touch up spray paint - P/N 1-850337.

◆ Kit 103-4051 includes antiscalp roller, spacer, & mounting hardware.

★ Link assembly nominal length is 6.89" (or approximately 6 7/8") between center of ball joint and center of furthest hole. See diagram on next page. Initially adjust both links to this dimension, then adjust to where both links are equally supporting rear of mower deck by lengthening one link and shortening the other by an equal amount.

▲ Complete cutter housings also include items 25 & 26.

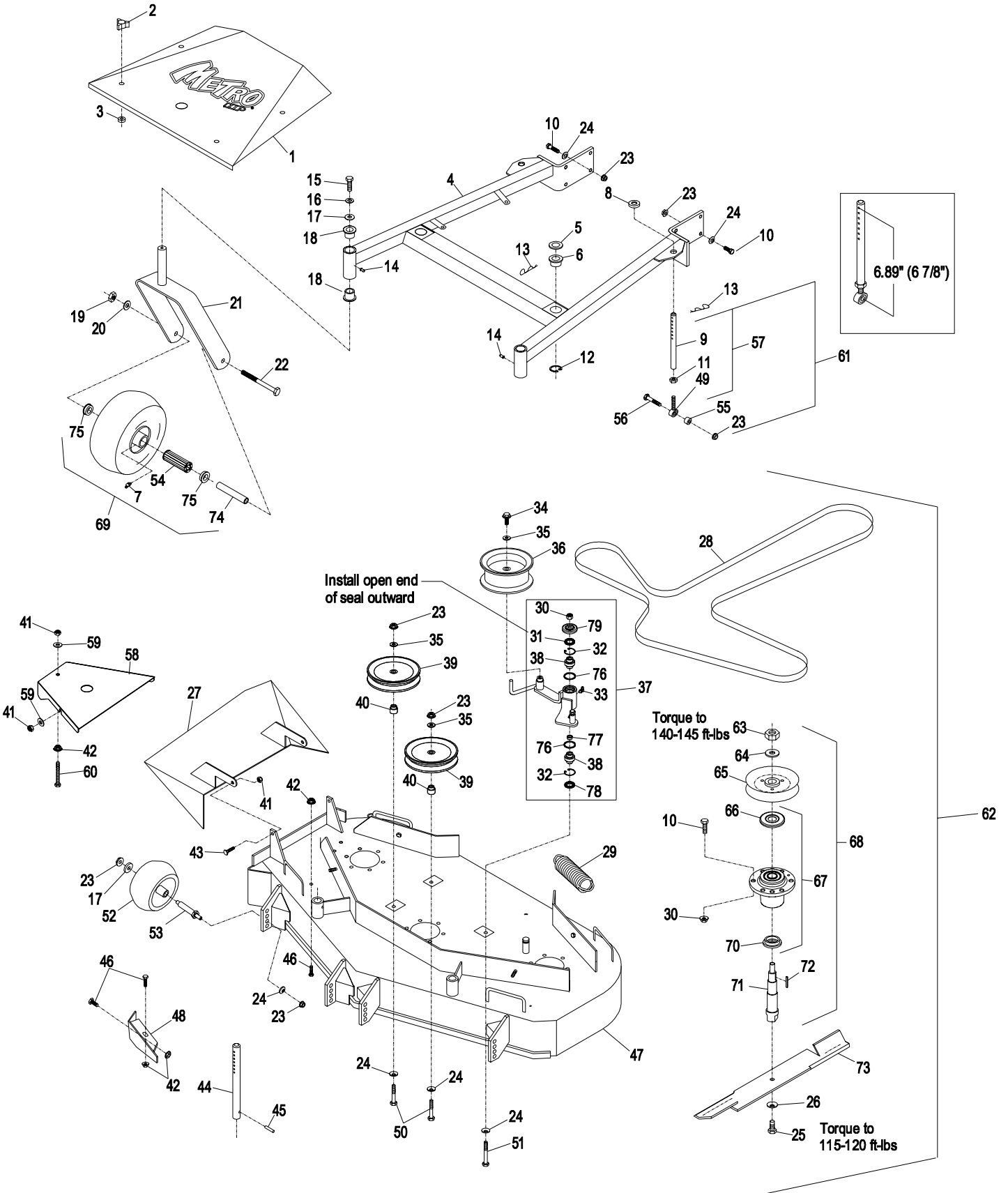
● Requires installation of Micro-Mulch accessory for proper mulching. Mulch kit P/N's MK483(48").

+ Apply Mobil HTS grease (P/N 103-5217 1.5 oz packet) (or a food-grade anti-sieze) between the spindles & bearings and spindles & sheaves and under top bearing guard. DO NOT use a copper or nickel based anti-sieze.

✘ Idler arm kit also includes items 24 & 51.

\* Use Pro-Lock, Nut Type (P/N 1-840022, .5ml tube) on nut Item 63.

# 48" MOWER DECK



## ENGINE DECK GROUP

Item	Part No.	Description	Qty.
1	103-1733	Grip, Foam.....	1
2	3296-6	Nut, Nyloc 3/8-24 .....	1
3	98-5975	Washer, Spring Disc 3/8.....	7
4	1-323379	Washer, Shifter Lever .....	1
5	1-323500	Transmission, Peerless.....	1
6	302-19	Zerk, 1/4-28 Str.....	6
7	1-324340	Asm, Coupling W/Guard & Zerk.....	2
8	3257-5	Key Woodruff #9 3/4 x 3/16.....	3
9+	1-323502	Shaft, Transmission Output.....	2
10	103-1606	Asm, Shift Lever W/Grip.....	1
11	1-303282	Switch, Neutral Start .....	1
12	9264964	Bolt, HH 5/16-18 x 3/4 Tap.....	4
13	32128-20	Nut, Whizlock 5/16-18 .....	18
14	103-3498	Asm, Shifter Plate (1-323387-03) W/ Decals .....	1
15	3230-1	Bolt, Carriage 5/16-18 x 3/4 .....	2
16	1-323389-03	Leg, Shifter Plate .....	2
17	1-323526	Ball, Stainless Steel .....	1
18	1-805005	Washer, Lock 5/16 Heavy .....	4
19	322-3	Screw, HH 5/16-18 x 3/4 .....	6
20	32151-62	Ring, Retaining .....	2
21+	1-323252	Bearing, Transmission Shaft .....	2
22	3296-42	Nut, Nyloc 1/4-20 .....	4
23	321-3	Screw, HH 1/4-20 x 5/8 .....	4
24	1-323254	Flange, Output .....	2
25◇	1-803310	Setscrew, 5/16-18 x 3/8.....	2
26	1-413355-03	Sleeve, Axle.....	1
27+	103-6513-03	Sheave, Transmission Output.....	2
28	3290-357	Nut, Whizlock 3/8-16.....	20
29	1-412376-03	Wld, Axle.....	2
30	1-543556	Spacer, Wheel .....	2
31	1-413347	Bushing, Sleeve .....	4
32	103-1695	Asm, Brake Lever RH W/Bushings (Shown).....	1
	103-1694	Asm, Brake Lever LH W/Bushings (Not shown).....	1
33	1-413344	Bushing, Pivot.....	2
34	3256-4	Washer, 3/8 Std .....	2
35	323-10	Screw, HH 3/8-16 x 2.....	2
36	1-803051	Nut, Push 3/8 .....	2
37	323-9	Screw, HH 3/8-16 x 1 3/4 .....	2
38	1-323262	Band, Brake .....	2
39	1-323307	Pin, Clevis 1/2 x 1 .....	2
40	323-6	Screw, HH 3/8-16 x 1 .....	6

Item	Part No.	Description	Qty.
41	3218-3	Nut, Jam 3/8-16 .....	2
42	3296-39	Nut, Nyloc 3/8-16.....	6
43	1-603402	Spring, Extension.....	2
44	1-323277	Idler, Wheel Drive .....	2
45	99-8664	Bolt, HH 3/8-16 x 3 Tap .....	2
46	103-1618	Swivel, Short.....	2
47	103-1700	Linkage, Brake.....	2
48	1-322125	Wld, Brake Linkage Swivel.....	2
49	1-513959	Wingnut, Nyloc 5/16.....	4
50	103-3497	Asm, Engine Deck Weldmt (103-2941-01) W/Decals.....	1
51	32151-47	Klipring, (For 3/8 Shaft).....	2
52	1-323283	Spacer, Shield .....	4
53	103-1703-03	Wld, Arm, RH (Shown).....	1
	103-1702-03	Wld, Arm, LH (Not Shown).....	1
54	322-7	Screw, HH 5/16-18 x 1 1/2.....	2
55	3296-29	Nut, Nyloc 5/16-18.....	4
56	323-39	Screw, HH 3/8-16 x 5.....	4
57	1-413359-01	Shield, Wheel Drive .....	2
58	322-6	Screw, HH 5/16-18 x 1 1/4.....	8
59	1-323261	Drum, Brake .....	2
60	1-413331	Sheave, Wheel Drive W/Offset.....	2
61	1-413332	Sheave, Wheel Drive .....	2
62	1-543511	Seal, Grease.....	2
63	1-543509	Cone, Bearing L44643.....	4
64	1-543508	Cup, Bearing L44610.....	4
65	1-413333	Wheel, Hub W/Cups .....	2
66	1-523157	Washer, Spacer.....	2
67	1-806800	Pin, Cotter 9/64 x 1 1/2 .....	2
68	1-809082	Nut, Slotted 1-14.....	2
69	1-543513	Cap, Grease .....	2
70	1-413473	Asm, Wheel and Tire .....	2
	1-413474	Tire 16 x 6.50-8.....	2
	1-603715	Wheel .....	2
71	242-50	Nut, Lug 1/2-20.....	8
72	1-413341	Belt, Wheel Drive Banded .....	2
73	1-413510	Clip, Loom 1/2 .....	2
74	1-413511	Hanger, Drag Shield .....	2
75	103-1701	Linkage, Drive.....	2
76	51-4220	Guard, Coupler .....	1
77	1-806003	Hairpin, Cotter .....	3
78	1-412358	Wld, Scraper.....	2
79	1-413353	Pin, Threaded .....	2
80	98-3259	Shield, Trailing.....	1

Exmark red touch up spray paint - P/N 1-850337.

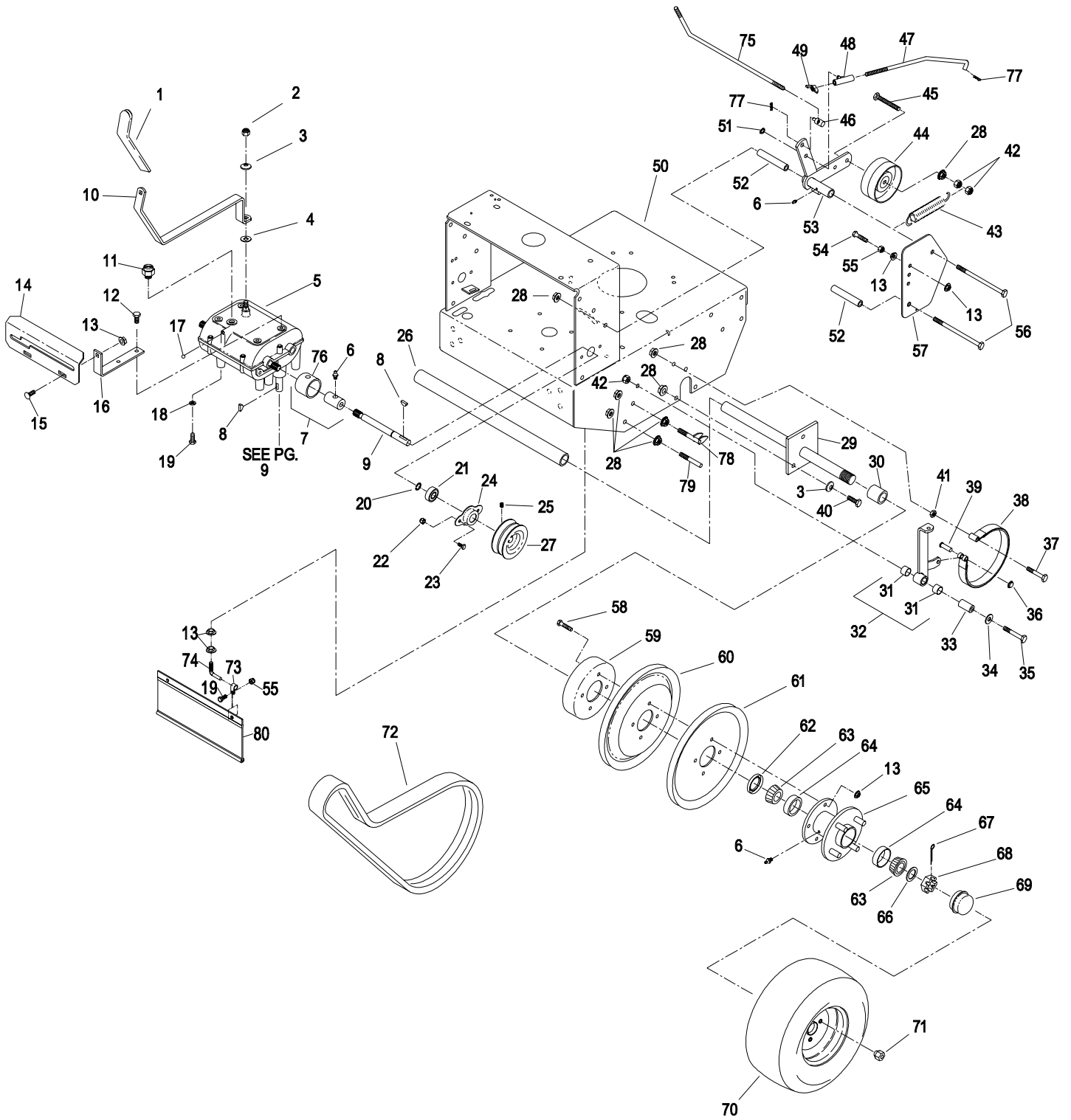
Exmark black touch up spray paint – Gloss black.

◇ Use Pro-lock (Nut type) Part No. 1-840022 (.5ml tube) on setscrew threads.

+ Apply anti-seize compound between transmission output shafts & bearings and between transmission output shafts and sheaves.



# ENGINE DECK GROUP



## ENGINE DECK GROUP (cont.)

Item	Part No.	Description	Qty.
1	323-11	Screw, 3/8-16 x 2-1/4.....	1
2	3256-3	Washer, 5/16 Std.....	2
3	32128-20	Nut, Whizlock 5/16-18.....	11
4	1-413009-01	Plate, Guard.....	1
5*	1-800521	Screw, HH 3/8-24 x 1 Gr 8.....	1
6	98-5975	Washer, Spring Disc 3/8.....	2
7	1-373034	Washer.....	2
8	322-3	Screw, HH 5/16-18 x 3/4.....	1
9▲	1-412031	Sheave, W/Drum (36").....	1
▲	1-412028	Sheave, W/Drum (48").....	1
10	1-807259	Key, Mach 1/4 x 1/4 x 1.....	1
11	1-412138-03	Wld, Pivot Pin.....	1
12	1-413062	Band, Brake Clutch.....	1
13	3296-39	Nut, Nyloc 3/8-16.....	5
14	1-413235	Washer, Spacer.....	1
15	1-413207	Pivot, Bearing.....	2
16	1-414418	Asm, Clutch Arm (1-1-412417-03) W/Bearings.....	1
17	1481	Zerk, 45° 1/4-28.....	1
18▲	1-413111	Bearing, Clutch Shaf.....	2
19	32120-8	Ring, Retaining.....	2
20	1-413012	Spacer, Bearing Clutch.....	1
21	1-523157	Washer, Spacer.....	1
22▲	103-6308	Sheave W/Shaft.....	1
23	1-413049-01	Plate, Clutch Pivot.....	1
24	3290-357	Nut, Whizlock 3/8-16.....	3
25	3296-29	Nut, Nyloc 5/16-18.....	1
26	1-213069	Washer, Strut.....	1
27	103-7398	Spring, Belt Tension.....	1
28	1-543007	Spacer, Clutch Anchor.....	1
29	3256-4	Washer, 3/8 Std.....	1
30	103-4681	Pivot, Bearing.....	2

Item	Part No.	Description	Qty.
31	1-806003	Hairpin, Cotter.....	1
32	1-413282	Linkage, Lower.....	1
33	1-414143	Asm, Link Pivot W/Bearings.....	1
34	302-19	Zerk, 1/4-28 Str.....	1
35	1-603044	Bushing, Idler Pivot.....	1
36	3231-6	Bolt, Carriage 3/8-16 x 2.....	1
37	322-6	Screw, HH 5/16-18 x 1 1/4.....	1
38	321-6	Screw, HH 1/4-20 x 1.....	2
39	32128-33	Nut, Whizlock 1/4-20.....	4
40	1-523498	Spring, Motion Control.....	1
41	1-303334	Washer, Spring Disc 5/16.....	5
42*	3212-10	Screw, HH 7/16-20 x 2 1/2.....	1
43	1-603610	Washer, Spring Disc 7/16.....	2
44	1-603609	Bushing, Clutch Keeper.....	1
45▲	1-413339	Sheave, Engine.....	1
46	1-807264	Key, Machine 1/4 x 1/4 x 2 5/8.....	1
47	103-6310	Wld, Belt Guide.....	1
48	103-6317	Belt, Blade Clutch.....	1
49▲	1-323278	Sheave, Transmission.....	1
50*	3245-41	Setscrew, 1/4-20 X 3/8.....	2
51	3256-5	Washer, 7/16 Std.....	2
52	3256-24	Washer, 3/8 SAE.....	1
53	1-323285	Idler, Transmission Drive.....	1
54	323-8	Screw, HH 3/8-16 x 1 1/2.....	2
55▲	103-1666	Sheave, Transmission Drive.....	1
56	1-413340	Spacer, Crankshaft.....	1
57	1-323280	Belt, Transmission Drive.....	1
58	322-7	Screw, HH 5/16-18 x 1 1/2.....	4
59+	103-1965	Valve, Oil Drain.....	1
60	103-1966	Adapter, M20-2.5 / 3/8 NPT.....	1
61	322-5	Screw, 5/16-18 x 1.....	6

Exmark red touch up spray paint – P/N 1-850337

Exmark black touch up spray paint – Gloss black

▲ Use anti-seize compound in the following locations:

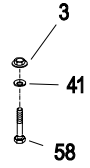
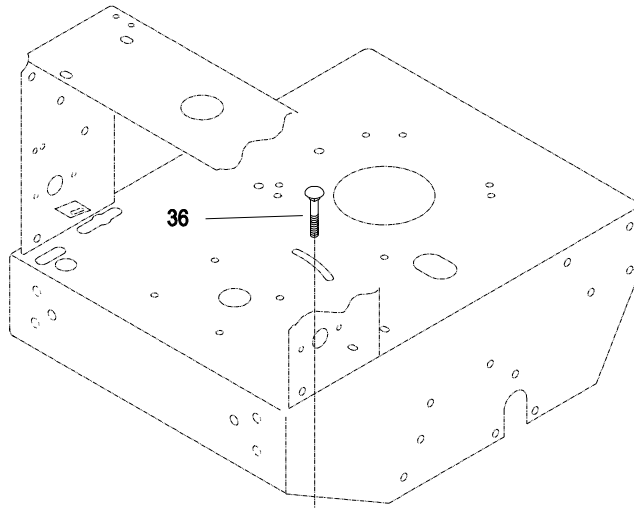
- ◆ Between the sheave and the engine crankshaft.
- ◆ Between the sheave w/shaft and the bearing bores.
- ◆ Between the sheave w/shaft and the sheave w/drum.
- ◆ Between the transmission shaft and the sheave.

\* Use Pro-lock (Nut type) Part No. 1-840022 (.5ml tube) in the following locations:

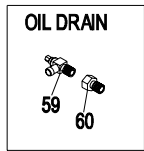
- ◆ On setscrew locations.
- ◆ On sheave retaining bolt in engine crankshaft.
- ◆ On sheave retaining bolt on clutch arm.

+ Use Teflon Pipe Sealant or equivalent between oil drain valve and adapter.

# ENGINE DECK GROUP (cont.)



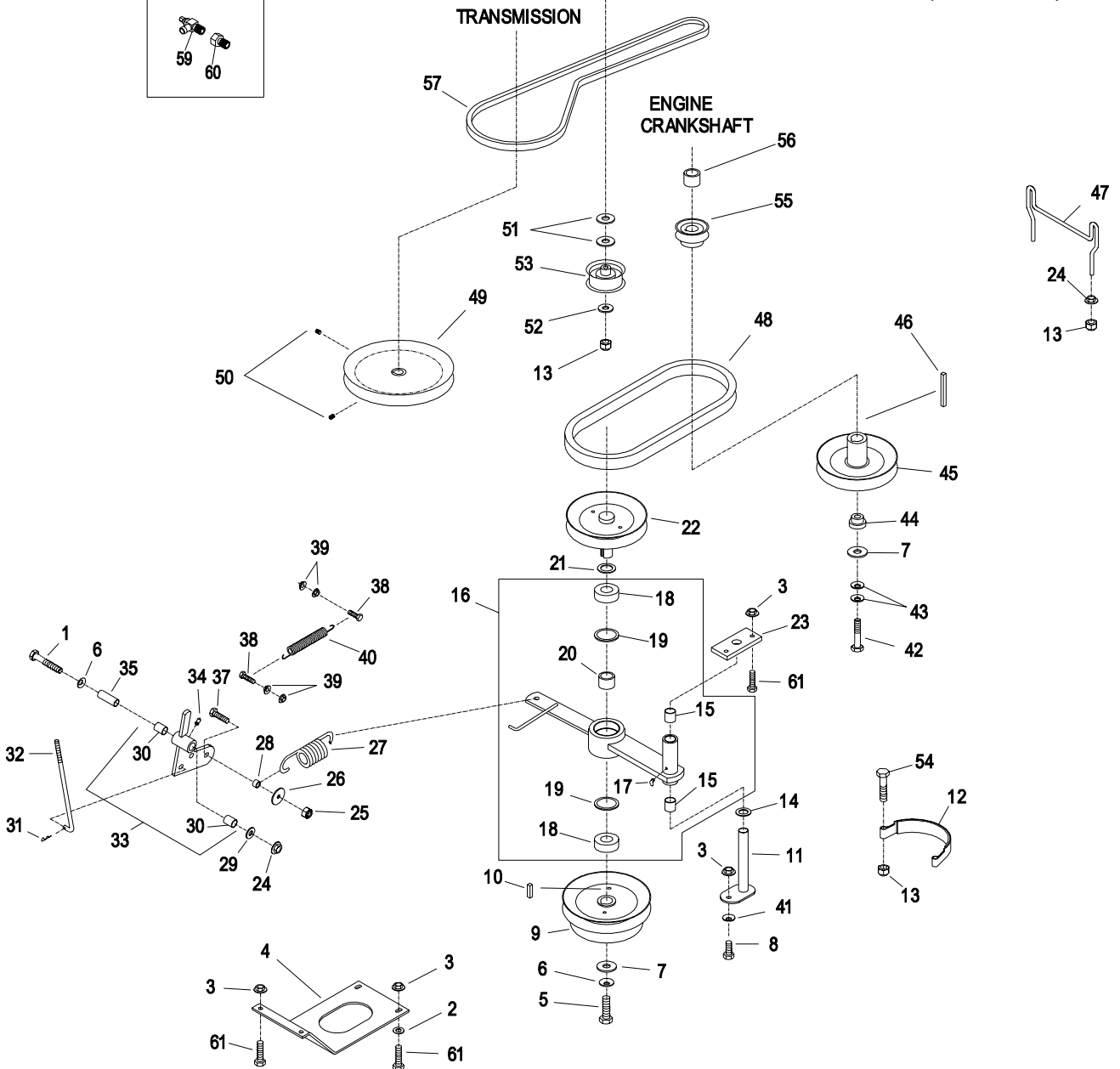
(ENGINE BOLTS)



OIL DRAIN

TRANSMISSION

ENGINE CRANKSHAFT



## ECS UPPER HANDLES and CONTROLS

Item	Part No.	Description	Qty.
1+	103-1566-03	Wld, OPC Lever LH.....	1
2	1-303365	Bushing, Nylon.....	2
3◆	1-803322	Setscrew, 5/16-24 x 5/16.....	2
4	103-0769-03	Wld, OPC Rod .....	1
5	1-303363	Spring, Actuator .....	1
6	1-513592	Knob, Ball Red .....	1
7	1-807513	Bolt, Carriage #10-24 x 1/2 .....	2
8	3296-2	Nut, Nyloc #10-24 .....	2
9	1-633696	Cable, Throttle Control .....	1
10+	103-1567-03	Wld, OPC Lever RH.....	1
11	1-303020	Grip,.....	1
12	1-414234	Asm. Clutch Lever W/Grip.....	1
13	296-29	Nut, Nyloc 5/16-18 .....	2
14	3256-24	Washer, 3/8 SAE .....	2
15	103-0027	Spacer .....	2
16	1-806003	Washer, 3/8 SAE .....	1
17	103-1149	Linkage, Upper.....	1
18	1-413279	Turnbuckle, 3/8-16 SS .....	1
19	3217-7	Nut, Hex 3/8-16.....	1
20	103-0815	Grip.....	2
21	1-303435	Washer, Spring Disc 1/4.....	6
22	103-1631	Latch, Thumb LH (Not Shown) .....	1
	103-1630	Latch, Thumb RH (Shown).....	1
23	296-42	Nut, Nyloc 1/4 .....	3
24	103-0770-03	Wld, Handle .....	1
25	98-5975	Washer, Spring Disc 3/8.....	4
26	323-6	Screw, HH 3/8-16 x 2 1/2 .....	4
27	103-3536	Cap, Fuel Tank .....	1
28	103-2893	Asm, Fuel Tank W/Fitting .....	1
29+	1-633023	Stud .....	2
30	1-633349	Spring, Fuel Tank.....	2
31	1-805005	Washer, Lock 5/16 Heavy .....	2
32	3296-47	Nut, Nyloc 5/16-18 .....	2
33	322-3	Screw, Hex Cap 5/16-18 x 3/4.....	2
34◆	103-2605	Fitting, Fuel Bulkhead W/Strainer .....	1
35	103-1797-01	Bracket, Choke Cable .....	1
36	1-303077	Clamp, Fuel Line.....	4
37	1-603955	Hose, Fuel Line 6".....	1
38	1-603770	Valve, Fuel.....	1
39	1-303022	Hose, Fuel Line 8.5".....	1

Item	Part No.	Description	Qty.
40	<b>Kawasaki</b>	PN 41019-1055 W/6" Fuel Line.....	1
41	103-1710	Harness, Wiring .....	1
42	3296-39	Nut, Nyloc 3/8-16 .....	1
43	1-403121	Switch, On/Off .....	1
	1-603511	Key, Ignition.....	1
	103-2106	Key, Exmark Logo .....	1
44	103-0498	Nut, Ignition Switch .....	1
45	1-633181	Plate, Tapped .....	2
46	3290-357	Nut, Whizlock 3/8-16.....	4
47	3290-500	Screw, PPH #10-24 x 5/8.....	4
48	1-513051	Switch, Neutral Lockout .....	2
49	1-323229	Clip, Loom 3/8 .....	1
50	1-303287	Tie, Cable 5 1/2 (Small) .....	5
51	1-323430	Module, Wiring Harness.....	1
52	323-11	Screw, HH 3/8-16 x 2 1/4.....	1
53	322-9	Screw, HH 5/16-18 x 1 3/4.....	2
54	1-413152	Bearing.....	4
55	103-2466-03	Lever, Drive LH.....	1
56	321-4	Screw, HH 1/4-20 x 3/4.....	1
57	321-14	Screw, HH 1/4-20 x 2 3/4.....	2
58	32128-33	Nut, Whizlock 1/4-20.....	12
59	103-0464	Pin, Spring 1/8 x 1/2.....	2
60	3256-22	Washer, 1/4 SAE .....	11
61◆	103-0235	Screw, HH 1/4-20 x 1 1/8 W/Nylon.....	2
62	103-2465-03	Lever, Drive RH .....	1
63	3220-3	Nut, Jam 3/8-24 .....	4
64	103-2765	Console (103-0546-03) W/Decals .....	1
65	3256-23	Washer, 5/16 SAE .....	4
66	321-3	Screw, HH 1/4-20 x 5/8.....	10
67	103-2513	Asm, Drive Lever RH (Shown) .....	1
	103-2514	Asm, Drive Lever LH (Not Shown) .....	1
68	103-2463	Balljoint.....	2
69	103-0489-03	Bracket, OPC Axle.....	1
70	103-1796	Cable, Choke Push/Pull .....	1
71	33113-016	Screw, HH M6-1 x 16mm.....	1
72	1-805004	Washer, Lock 1/4 Heavy.....	1
73	1-303088	Clip, Cable.....	1
74	1-413510	Clip, Loom 1/2 .....	1
75	33114-016	Screw, HH M8-1.25 x 16mm .....	1

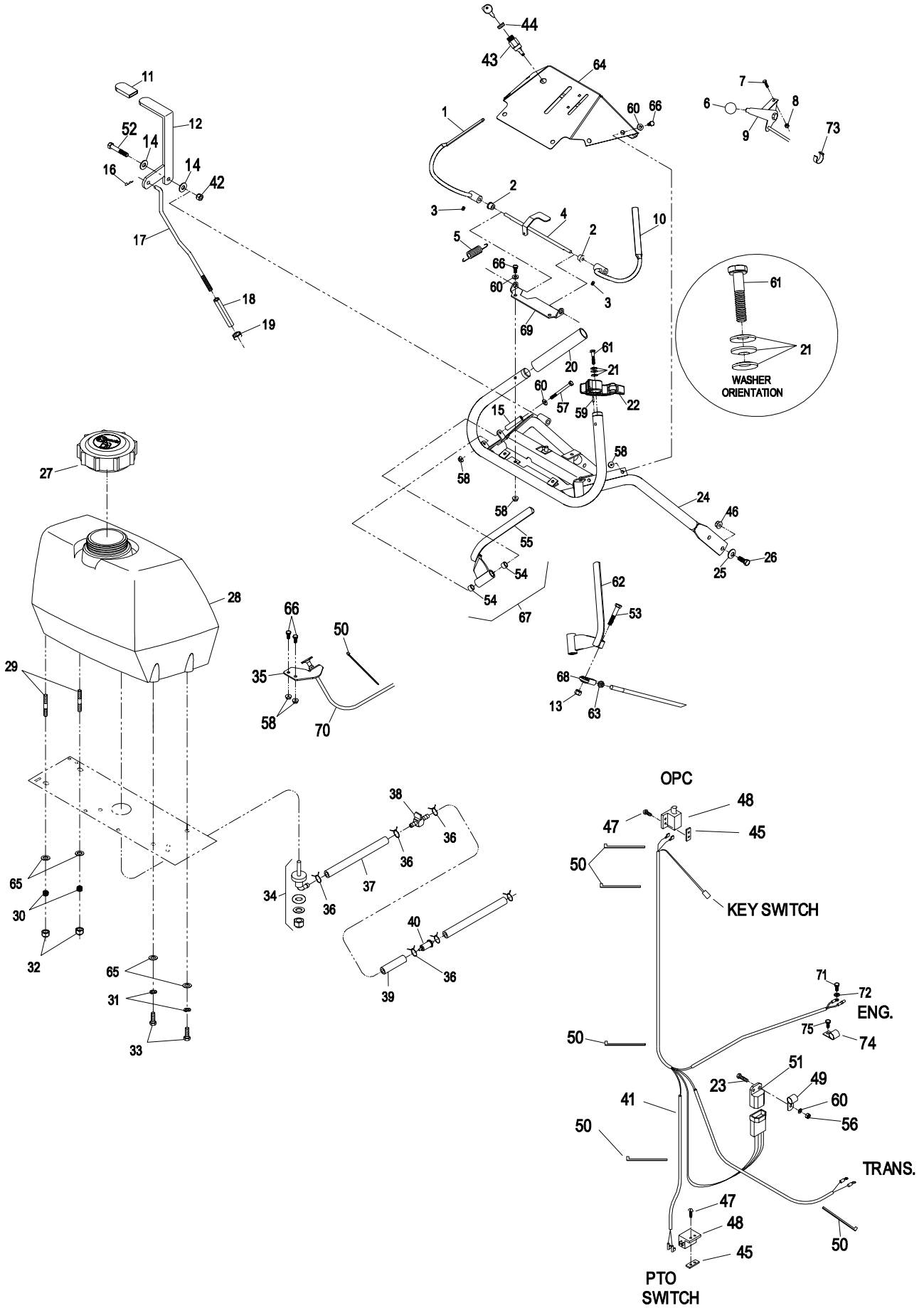
NOTE: Use dielectric grease on all electrical connections.

Exmark black touch up spray paint – Gloss black.

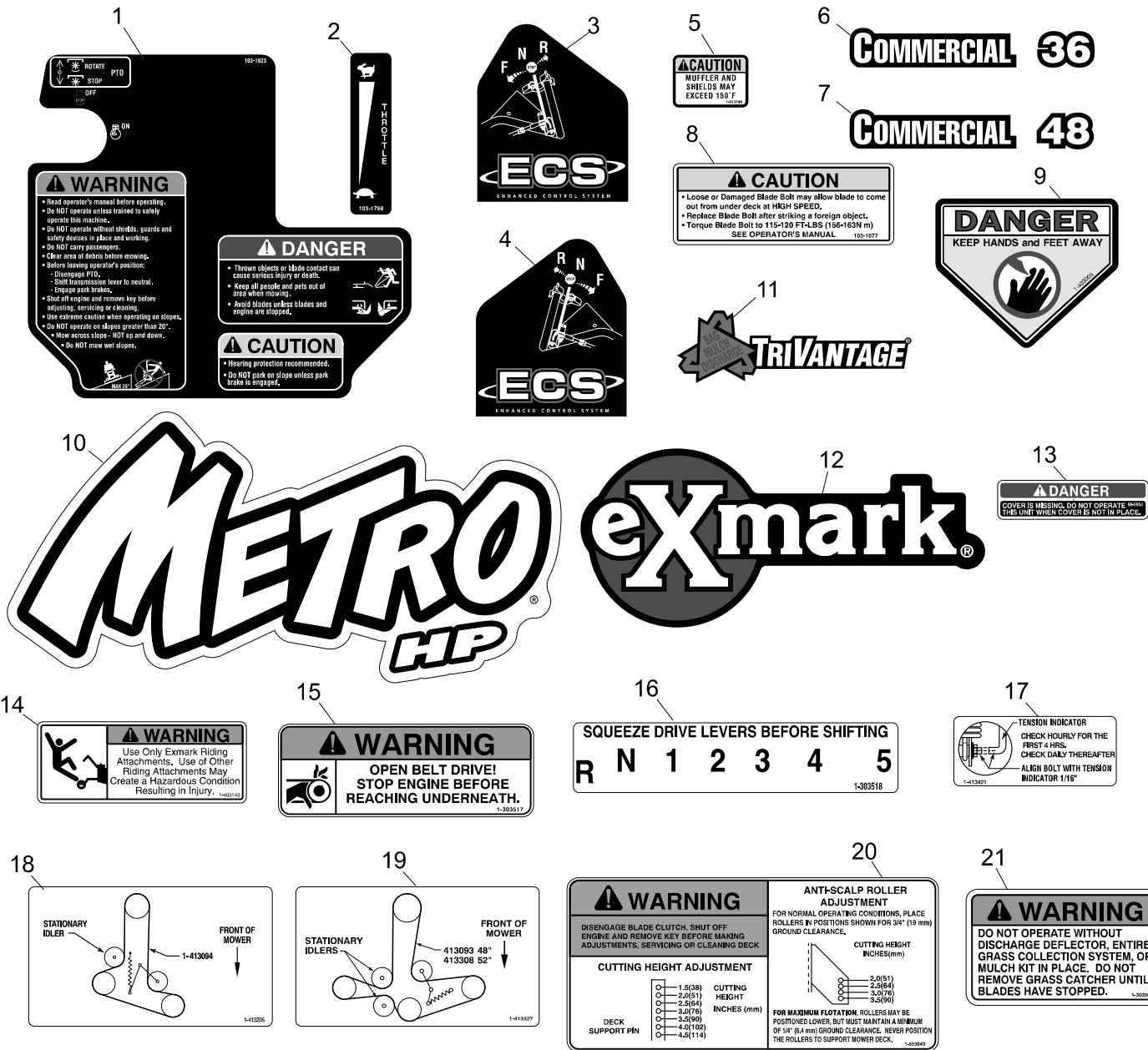
◆ Use Pro-Lock nut type, Part no. 1-840022 (.5cc tube) on setscrew threads, on thumbclatch screws, and on fuel fitting.

+ Use Pro-Lock retaining type, Part no. 1-840023 (.5cc tube) on inside of bore of OPC hub and on fuel tank studs, where studs are inserted into tank.

# ECS UPPER HANDLES and CONTROLS



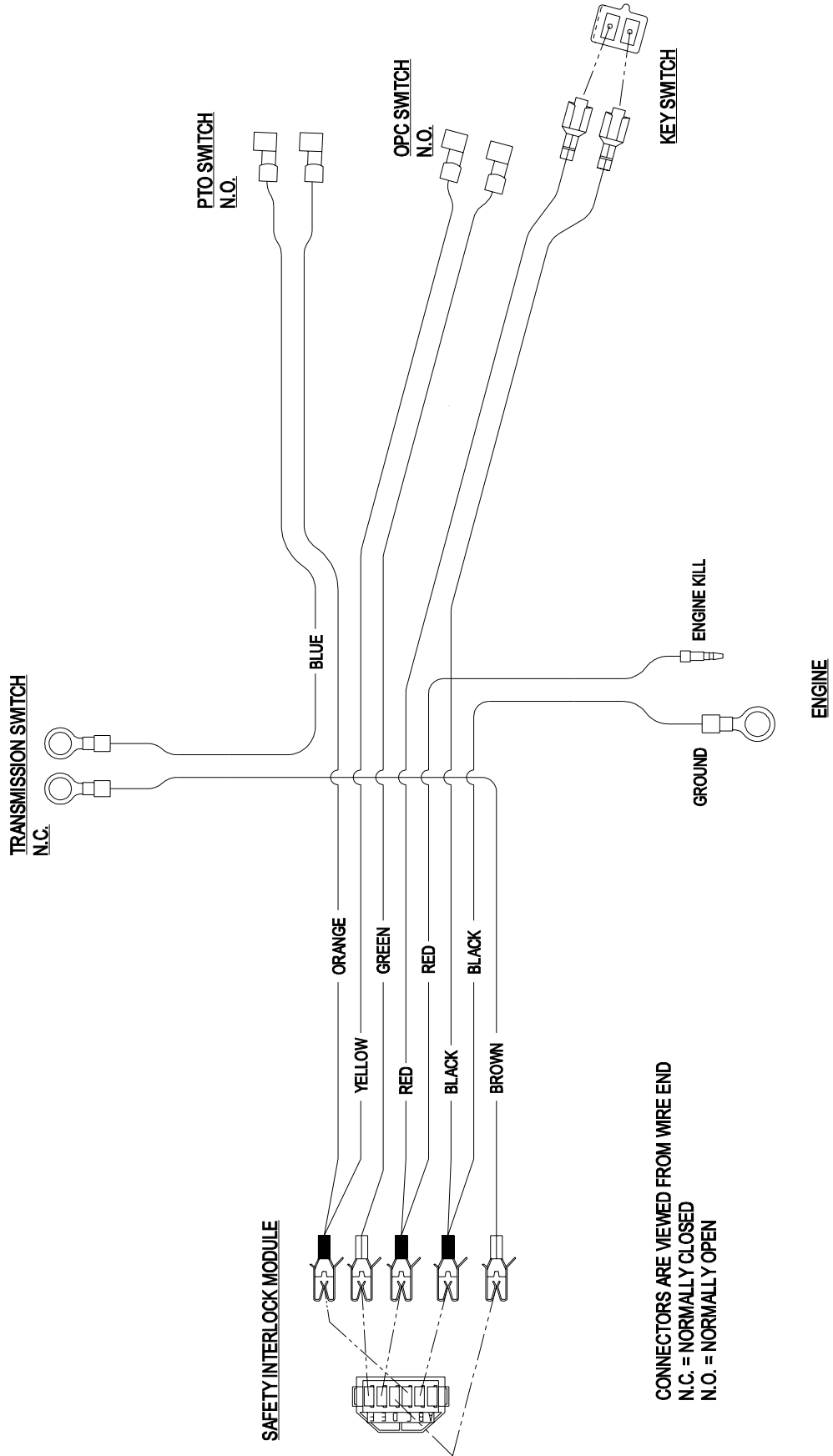
# DECAL GROUP



Item	Part No.	Description	Qty.
1	103-1623	Decal, Console.....	1
2	103-1798	Decal, Throttle.....	1
3	103-2244	Decal, LH ECS Instruction.....	1
4	103-2245	Decal, RH ECS Instruction.....	1
5	1-513746	Decal, Muffer.....	2
6	1-323411	Decal, Commercial 36.....	1
7	1-403131	Decal, Commercial 48.....	1
8	103-1077	Decal, Bolt Torque.....	1
9	1-403005	Decal, Danger.....	2
10	103-2921	Decal, MHP Model.....	1
11	1-303520	Decal, Trivantage.....	1
12	103-2882	Decal, Exmark Logo.....	1

Item	Part No.	Description	Qty.
13	98-5954	Decal, Missing Cover (36").....	1
	98-5954	Decal, Missing Cover (48").....	3
14	1-403143	Decal, Sulky Warning.....	1
15	1-303517	Decal, Belt Drive.....	1
16	1-303518	Decal, Shifter.....	1
17	1-413421	Decal, Indicator.....	1
18	1-413206	Decal, Belt Routing (36").....	1
19	1-413327	Decal, Belt Routing (48").....	1
20	1-553049	Decal, Mower Deck.....	1
21	1-303508	Decal, Discharge Warning.....	1
	1-414395	Decal Kit	

# ELECTRICAL DIAGRAM



ELECTRICAL DIAGRAM

**SEE EXMARK'S COMPLETE  
LINE OF ACCESSORIES**

**RIDING ACCESSORIES**

CUSTOM RIDE SEAT SUSPENSION SYSTEM  
DECK LIFT ASSIST KIT  
HITCH KIT  
LIGHT KIT  
MICRO-MULCH SYSTEM  
ROLL OVER PROTECTION SYSTEM (ROPS)  
SNOW BLADE  
SUN SHADE  
TRASH CONTAINER  
TURF STRIPER  
ULTRA VAC COLLECTION SYSTEM  
ULTRA VAC QUICK DISPOSAL SYSTEM

**WALK BEHIND ACCESSORIES**

GRASS CATCHER  
MICRO-MULCH SYSTEM  
STEERABLE SULKY  
SULKY HITCH KIT  
TURF STRIPER

Check us out on the Web:  
**[www.exmark.com](http://www.exmark.com)**

© 1997-2004 EXMARK MFG. CO. INC.  
INDUSTRIAL PARK BOX 808  
BEATRICE, NE 68310

PART NO. 103-7194  
(402) 223-6300  
FAX (402) 223-5489

ALL RIGHTS RESERVED

PRINTED IN U.S.A.

