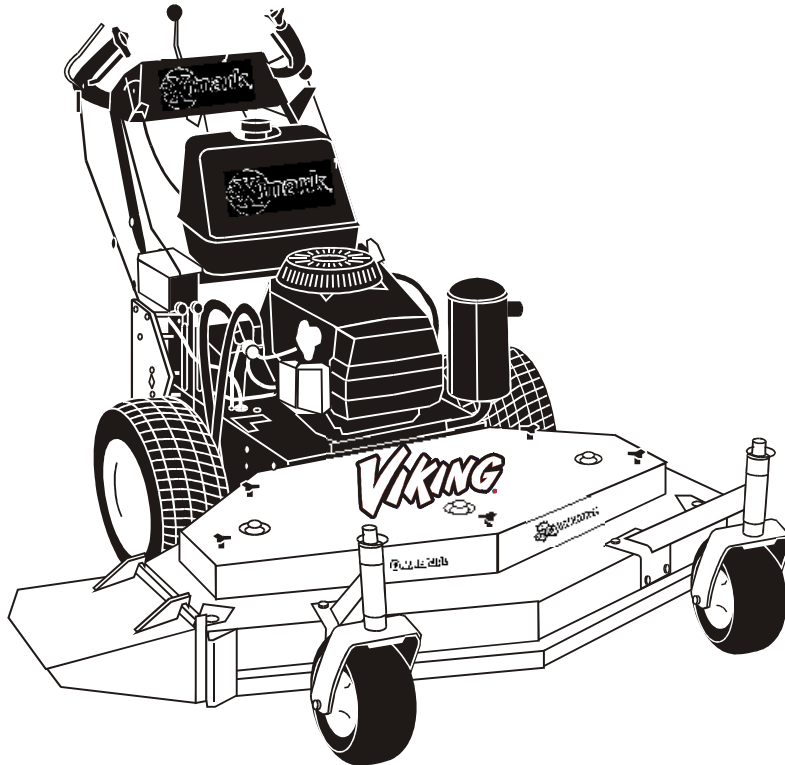


For Serial Nos.
370,000 & Higher



PARTS MANUAL

VIKING HYDRO

CONGRATULATIONS on the purchase of your new Exmark mower. This product has been carefully designed and manufactured to give you a maximum amount of dependability and years of trouble-free operation. If additional information is needed, or should you require trained mechanic service, contact your authorized Exmark equipment dealer or distributor. If you need to order replacement parts from your dealer, always give the model number and serial number of your mower as well as the part number, description and quantity of the part needed.

The Serial No. plate is located on the top front engine frame on the right hand side of the machine. For ease of ordering and reference, we suggest that you record the information requested in the following identification table.

Place Model No. and Serial No. Label Here (Included in Literature Pack) or Fill in Below
Model No. _____
Serial No. _____

Engine Model No. and Spec. No. (Code) _____

Engine Serial No. (E/No) _____

Date Purchased _____

EXMARK PARTS PLUS® PROGRAM

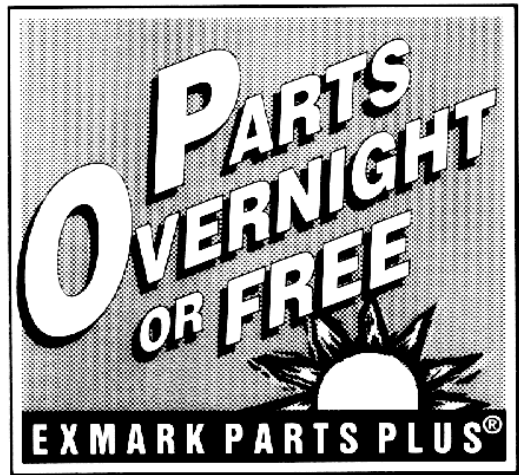
EFFECTIVE DATE: September 1, 1995

Program

If your Exmark dealer does not have the Exmark part in stock, Exmark will get the parts to the dealer the next business day or the part will be FREE* Guaranteed!!

How the Program Works

1. If dealer does not have part in stock for a "down" unit at the time of request by customer, the dealer contacts his distributor by 1:00 p.m., local time, and requests Exmark Parts Plus® shipment of six (6) line items or less.
2. Distributor ships part(s) to dealer or customer, as requested by dealer, same day, overnight UPS. Distributor bills dealer for part and freight charges where applicable.
3. If distributor does not have the part(s) in stock to satisfy Exmark Parts Plus® order, he contacts Exmark by 3:00 p.m., central time, with an Exmark Parts Plus® order of six (6) line items or less.
4. If order is received by 3:00 p.m. central time, Exmark ships part(s) direct to dealer or customer, as requested by distributor, same day, overnight UPS. Exmark bills the distributor for parts and shipping charges, where applicable.
5. The customer pays for the part and freight if it is shipped under the Exmark Parts Plus® and if it arrive in accordance to the program.
6. Who pays for the part and freight if it fails to arrive overnight in accordance to the program?
 - A. Under any circumstance the customer does not pay.
 - B. If the part does not arrive overnight due to:
 1. The dealer not submitting the Exmark Parts Plus® order to his Exmark distributor by 1:00 p.m., the dealer pays for the part and freight.
 2. The Distributor being unable to ship the part the same day or not submitting the Exmark Parts Plus® order to Exmark by 3:00 p.m., central time, the Distributor pays for the part and freight.
 3. Exmark being unable to ship the part and the Exmark parts order is received by 3:00 p.m., central time, Exmark pays for the part and freight.
 4. If the part does not arrive overnight due to the shipper (UPS), the shipper pays for the freight and Exmark pays for the part.



The following restrictions apply -- The Exmark Parts Plus® Program is available only through participating Exmark Dealers and applies only to orders submitted on this program Monday through Thursday. Parts Plus service is available only in the 48 contiguous United States. UPS has initiated a Saturday delivery program to many areas of the continental United States and can be requested for an overnight shipment on Friday to be delivered Saturday. The next day air charge, plus the Saturday delivery fee will be the responsibility of the purchaser. Exmark Mfg. will assume no responsibility for Saturday delivery shipments. To qualify, all Exmark Parts Plus® orders must be received by Exmark by 3:00 p.m., central time. Orders must be six (6) line items or less. Exclusions from the Exmark Parts Plus® Program are: Any wholegood or accessory in its entirety, engines and engine replacement parts, 5-speed Peerless transmissions and 5-speed transaxles, hydraulic or hydrostatic wheel motors, cutter decks and engine decks or any item exceeding United Parcel Service size and weight restrictions.

Due to UPS restrictions, aerosol spray paint is considered a hazardous material and cannot be shipped via UPS next day or Second Day Air.

Exmark Manufacturing stocks a limited supply of parts for transaxles, pumps and wheel motors. These parts can be ordered for Next Day Air shipment but will not be guaranteed per the Parts Plus Program.

WARNING

**READ OPERATOR'S MANUAL BEFORE
OPERATING OR SERVICING EXMARK EQUIPMENT.**

TABLE OF CONTENTS

<u>Description</u>	<u>Page</u>
Decals.....	11
Electrical Group	14
Engine Deck Group	6-9
48" Mower Deck	4-5
Hydraulics Group	10
32" & 36" Mower Deck	2-3
ECS Upper Handles & Controls	12-13
Wiring Diagrams	15

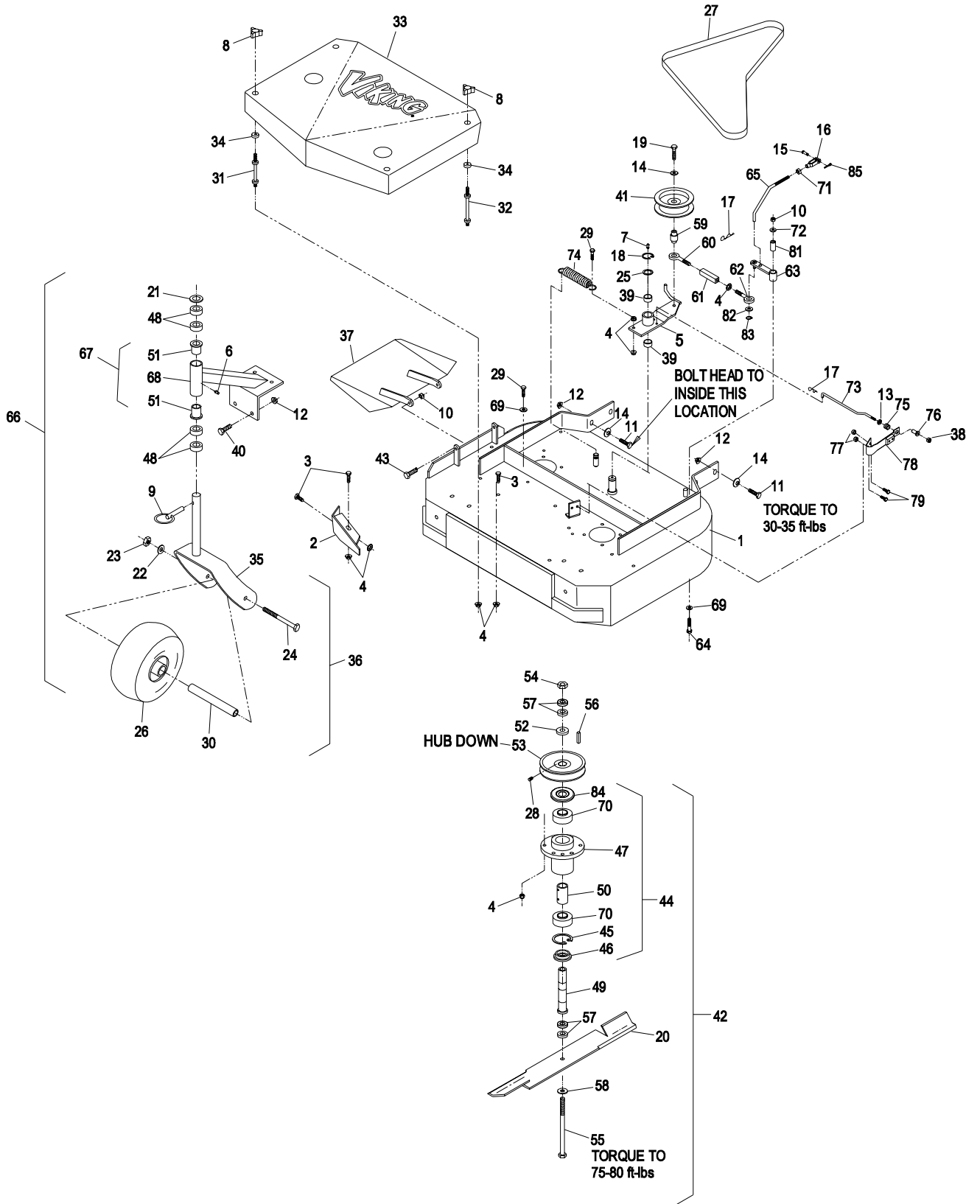
32" & 36" MOWER DECK

Ref. No.	Part No.	Description	Qty. Req'd.	Ref. No.	Part No.	Description	Qty. Req'd.
1	103-2312	Deck(103-2307-01)w/decals & dogleg (36")	1	38	3296-56	Nut,nyloc 1/4-20 thin	1
	103-2313	Deck(103-2301-01)w/decals & dogleg (32")	1	39	1-323729	Powder metal bearing	2
2	1-302189-01	Baffle wldmnt, dogleg.....	1	40	323-4	3/8-16 x 3/4 HH capscrew.....	8
3	322-2	Screw, 5/16-18 x 5/8	7	41	1-603843	Idler pulley (heavy duty).....	1
4	32128-20	5/16-18 Whizlock nut.....	22	42	103-2555	Cutter Housing Complete	2
5	103-3600	Engagement arm w/bushing.....	1	43	322-5	5/16-18 x 1 HH capscrew.....	2
6	302-52	Grease Zerk, 1/8 NPT straight	2	44	103-2547	Cutter housing assembly.....	2
7	302-19	Grease Zerk, 1/4-28 straight	1	45	32120-8	Retaining ring	2
8	1-323385	Knob, belt cover	4	46	103-2535	Spacer.....	2
9	1-809020	Quick pin, 10" caster	2	47	1-323532	Cutter housing.....	2
10	3296-29	5/16-18 Nyloc hex nut	3	48	1-303314	Spacer, 10" caster.....	8
11	323-6	3/8-16 x 1 HH capscrew	6	49+	1-323529	Tube, spindle.....	2
12	3290-357	3/8-16 whizlock nut.....	14	50	103-2534	Spacer.....	2
13	1-323748	Ring, push-on 7/16	1	51	1-303514	Flange , thrust bearing	4
14	98-5975	3/8 Disc spring washer	7	52	1-323339	Retaining washer, sheave.....	2
15	1-808280	5/16 x 1 Clevis pin	1	53+	1-403183	Pulley	2
16	1-303105	Yoke	1	54	3219-6	5/8-18 UNF hex nut.....	2
17	1-806003	Cotter hairpin.....	2	55	1-800861	5/8-18 x 8 HH Capscrew (Gr 5).....	2
18	32151-103	E-Ring for .875 rd.	1	56	1-807267	Key, 1/4 x 3/16 x 1 1/4.....	2
19	702809	3/8-16 x 1 7/8 capscrew	1	57	1-323539	Spacer, blade drive	8
20	103-2528	Blade, Notched (36").....	2	58	1-513208	5/8 Spring disc washer.....	2
•	103-2518	Blade, Mulching (36").....	2	59	1-303434	Engagement bushing	1
	103-2508	Blade, Low Lift (36") optional	2	60	1-303348	Eye bolt (left hand thread).....	1
	103-1578	Blade, Solid (36")	2	61	1-303236	Turnbuckle body.....	1
	103-2527	Blade, Notched (32").....	2	62	1-303238	Eye bolt (right hand thread).....	1
•	103-2517	Blade, Mulching (32").....	2	63	1-322235	Assist arm	1
	103-2507	Blade, Low Lift (32") optional.....	2	64	322-10	Screw, 5/16-18 X 2.....	1
	103-1577	Blade, Solid (32")	2	65	1-323174	Assist arm linkage.....	1
21	1-513338	Washer, special	2	66	103-2281	Caster/mount, complete.....	2
22	3253-7	1/2 spring lockwasher.....	2	67	103-2296	Caster wheel support w/brgs, weighted ..	2
23	3217-9	1/2-13 Hex nut.....	2	68	103-2297-01	Caster wheel support wldmnt, weighted .	2
24	325-20	1/2-13 x 6 HH capscrew	2	69	1-303334	5/16 Spring disc washer	9
25	1-303352	Washer, spindle	1	70+	103-2477	Bearing.....	4
26	103-1224	Tire & Wheel Asm	2	71	3219-2	5/16-24 Hex nut.....	1
	1-513809	Roller bearing.....	1	72	3256-3	Wshr, flat std 5/16	1
	103-2170	Bushing	2	73	1-323715	Rod, brake 36"	1
27	1-323735	Drive belt (to blades) 36" Model	1		1-323718	Rod, brake 32"	1
	1-323733	Drive belt, (to blades) 32" Model	1	74	1-323071	Spring.....	1
28♦	1-803310	Setscrew, 5/16-18 x 3/8.....	2	75	1-323747	Spring, compression	1
29	322-6	5/16-18 x 1 1/4 HH capscrew	9	76	1-323746	Spacer, flanged	1
30	103-2169	Spacer, front caster.....	2	77	3296-42	Nut, nyloc 1/4 - 20.....	2
31	1-303537	Stud, belt shield (short)	2	78	1-324372	Pad/spring assy.....	1
32	1-303536	Stud, belt shield (long)	2	79	321-4	Screw, HHCap 1/4-20 X 3/4	2
33	1-302218	Shield (1-302213-01) w/decals, (36")... 1	1	81	1-403179	Tube, pivot	1
	103-2589	Shield (1-322149-01) w/decals, (32")... 1	1	82	3256-23	Wshr, flt SAE 5/16.....	1
34	1-323417	Washer, belt cover mount	4	83	32120-35	E-ring	1
35	1-322145-01	Fork wldmnt, caster.....	2	84+	103-1330	Guard,Bearing top	2
36	103-1236	Caster wheel assembly	2	85	3272-5	Cotter pin 3/32 x 1/2.....	1
37	1-302233-01	Chute	1	86▲	103-2171	Kit,semi-pneumatic wheel replacement	2

Exmark red touch up spray paint - P/N 1-850337

- ♦ Use Pro-lock Nut Type (p/n 1-840022 .5 ml tube) on the setscrews
- Requires installation of Micro-Mulch accessory for proper mulching. Mulch kit P/N's MK322(32") or MK362(36")
- ▲ Kit 103-2171 used to install semi-pneumatic casters on machines originally fitted with pneumatic casters. Includes 103-1224 & 103-2169. Order 2 per machine.
- + Apply Mobil HTS grease (or a food-grade antisieze) between the spindles & bearings, spindles & sheaves, and under top bearing guard. DO NOT use copper or nickel based anitisieze.

32" & 36" MOWER DECK



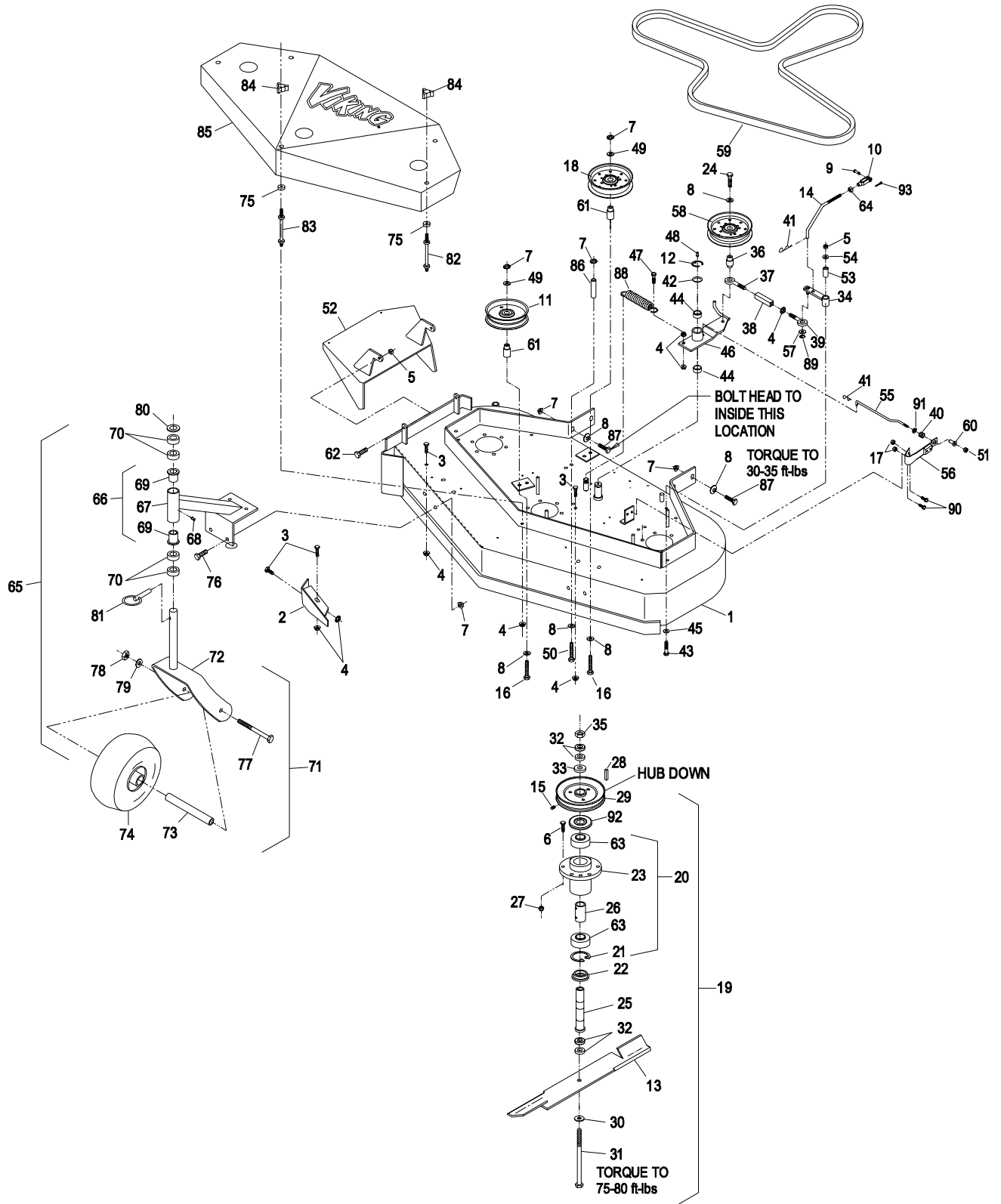
48" MOWER DECK

Ref. No.	Qty. Part No.	Description	Req'd.	Ref. No.	Qty. Part No.	Description	Req'd.
1	1-404257	Deck (1-402108-01) w/decals & dogleg..	1	47	322-6	5/16-18 1 1/4 HH capscrew	1
2	1-402107-01	Baffle, dogleg	1	48	302-19	Zerk 1/4-28 strt	1
3	322-2	5/16-18 x 5/8 HH capscrew	4	49	3256-24	3/8 Flatwasher	2
4	32128-20	5/16-18 Whizlock nut.....	12	50	323-20	3/8-16 x 3 1/4 HH capscrew.....	1
5	3296-29	5/16-18 Nyloc hex nut	3	51	3296-56	Nut, nyloc 1/4-20 thin	1
6	323-7	3/8-16 x 1 1/4 HH capscrew	18	52	1-402106-01	Chute wldmt.....	1
7	3290-357	3/8-16 whizlock nut.....	17	53	1-403179	Tube, pivot	1
8	98-5975	3/8 disc spring washer.....	10	54	3256-3	Washer, Flat Std 5/16.....	1
9	1-808280	5/16 x 1 Clevis pin	1	55	1-323714	Rod brake 48" LH	1
10	1-303105	Yoke	1	56	1-324372	Pad/spring assy	1
11	1-613098	Idler pulley "V"	1	57	3256-23	5/16 SAE flat washer	1
12	32151-103	E-Ring for .875 rd.....	1	58	1-603843	Pulley, idler (heavy duty).....	1
13	103-2527	Blade, Notched	3	59	1-403174	Drive belt (main deck)	1
•	103-2517	Blade, mulching	3	60	1-323746	Spacer, flanged	1
	103-2507	Blade, Low Lift (optional).....	3	61	1-403184	Bushing	2
	103-1577	Blade, Solid	3	62	322-5	5/16-18 x 1 HH capscrew.....	2
14	1-323174	Assist arm linkage	1	63+	103-2477	Bearing	6
15♦	1-803310	Setscrew, 5/16-18 x 3/8.....	3	64	3219-2	5/16-24 Hex nut	1
16	323-13	3/8-16 x 2 3/4 HH capscrew	2	65	103-2281	Caster/mount, complete.....	2
17	3296-42	Nut, nyloc 1/4 - 20	2	66	103-2296	Caster wheel support w/brgs, weighted..	2
18	1-403186	Idler pulley	1	67	103-2297-01	Caster wheel support wldmnt, weighted..	2
19	103-2555	Cutter Housing Complete	3	68	302-52	Grease zerk, 1/8 N.P.T.	2
20	103-2547	Cutter housing assembly.....	3	69	1-303514	Flange, thrust bearing.....	4
21	32120-8	Retaining ring	3	70	1-303314	Spacer, 10" caster	8
22	103-2535	Spacer.....	3	71	103-1236	Caster wheel assembly.....	2
23	1-323532	Cutter housing	3	72	1-322145-01	Fork wldmnt, caster	2
24	702809	3/8-16 x 1 7/8 HH Capscrew.....	1	73	103-2169	Spacer, front caster	2
25+	1-323529	Cutter spindle tube	3	74	103-1224	Tire & Wheel Asm.....	2
26	103-2534	Spacer	3		1-513809	Roller bearing	2
27	3296-39	Nut, nyloc 3/8-16	18		103-2170	Bushing.....	4
28	1-807267	Key, 1/4 x 3/16 x 1 1/4.....	3	75	1-323417	Washer, belt cover mount.....	5
29+	1-403183	Pulley	3	76	323-4	3/8-16 x 3/4 HH capscrew.....	8
30	1-513208	5/8 Spring disc washer	3	77	325-20	1/2-13 x 6 HH capscrew.....	2
31	1-800861	5/8-18x8 HH Capscrew(Gr5).....	3	78	3217-9	1/2-13 Hex nut	2
32	1-323539	Spacer, blade drive	12	79	3253-7	1/2 spring lockwasher	2
33	1-323339	Washer, retainer (sheave).....	3	80	1-513338	Washer, special.....	2
34▽	1-322230	Assist arm	1	81	1-809020	Quick pin, 10" caster.....	2
☆	1-322235	Assist arm	1	82	1-303537	Stud, belt shield (short).....	2
35	3219-6	5/8-18 UNF hex nut.....	3	83	1-303536	Stud, belt shield (long).....	3
36	1-303434	Engagement bushing	1	84	1-323385	Knob, belt cover.....	5
37	1-303348	Eye bolt (left hand thread).....	1	85	1-404237	Shield (1-402100-01) w/decals	1
38	1-303236	Turnbuckle body.....	1	86	1-403188	Spacer, belt guide.....	1
39	1-303238	Eye bolt (right hand thread).....	1	87	323-6	3/8-16 x 1 HH capscrew.....	6
40	1-323747	Spring, compression	1	88	1-323071	Spring 5sp/dr idler.....	1
41	1-806003	Cotter hairpin.....	2	89	32120-35	E - ring	1
42	1-303352	Washer, spindle	1	90	321-4	1/4-20 X 3/4 HH capscrew	2
43	322-10	Screw, 5/16-18 X 2.....	1	91	1-323748	Ring, push-on 7/16	1
44	1-323729	Powder metal bearing	2	92+	103-1330	Guard,Bearing top	3
45	1-303334	Washer, Sprg Disc 5/16	1	93	3272-5	Cotter pin 3/32 x 1/2	1
46▽	1-402109	Engagement arm w/bushings	1	94▲	103-2171	Kit,semi-pneumatic whl replacement	1
☆	103-3600	Engagement arm w/bushings	1				

Exmark red touch up spray paint - P/N 1-850337

- ♦ Use Pro-lock Nut Type (p/n 1-840022 .5 ml tube) on the setscrews
- Requires installation of Micro-Mulch accessory for proper mulching. Mulch kit P/N's MK483
- ▲ Kit 103-2171 used to install semi-pneumatic casters on machines originally fitted with pneumatic casters. Includes 103-1224 & 103-2169. Order 2 per machine.
- + Apply Mobil HTS grease (or a food-grade antisieze) between the spindles & bearings, spindles & sheaves, and under top bearing guard. DO NOT use copper or nickel based antisieze.
- ▽ This component is required for units with S/N 378,077 and lower.
- ☆ This component is required for units with S/N 378,078 and higher.

48" MOWER DECK



ENGINE DECK GROUP

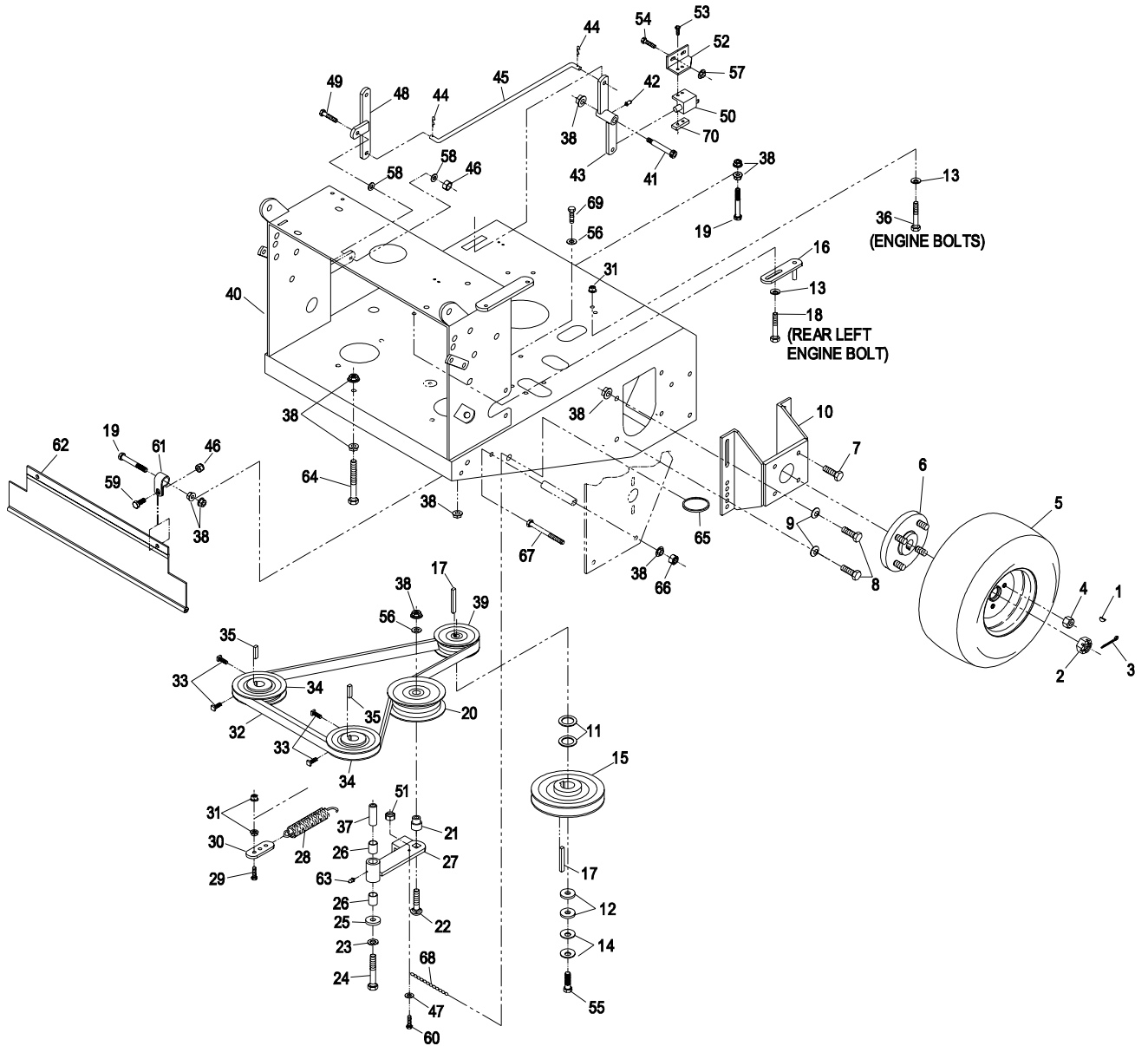
Ref. No.	Part No.	Description	Qty. Req'd.	Ref. No.	Part No.	Description	Qty. Req'd.
1	1-807019	Key, woodruff 1 x 1/4	2	31	32128-20	Nut, whizlock 5/16-18(Kaw)	6
2	32136-5	Nut, slotted 3/4-16.....	2		32128-20	Nut, whizlock 5/16-18(Koh)	2
3	1-806800	Pin, cotter 9/64 x 1-1/2.....	2	32	1-653163	Belt, pump drive.....	1
4	242-50	Nut, wheel 1/2-20	8	33▽	1-803050	Setscrew, 5/16-18 x 3/4....	4
5	1-413473	Tire & Wheel Assembly (36" & 48")	2	34	1-413010	Sheave - pump	2
	1-413474	Tire 16 x 6.50-8 (36" & 48")..	1	35	1-807272	Key, 5mm sq. x 25mm.....	2
	1-603715	Wheel (36" & 48").....	1	36	322-7	Screw, 5/16-18 x 1 1/2 (Kaw).	3
	103-2292	Tire & Wheel Assembly (32").....	2		33114-025	Screw, M8-1.25 x25mm (Koh)	3
	103-2305	Tire 16 x 4.80-8 (32").....	1	37	1-603044	Bushing - Idler pivot.....	1
	103-2306	Wheel (32").....	1	38	3290-357	Nut, whizlock 3/8-16	20
6	1-602997	Hub, tapered(4 bolt)w/stds.	2	39◆	1-653035	Pulley, pump drive	1
	1-633926	Stud, wheel 1/2-20	8	40	103-3500	Deck, eng(103-2908-01)w/decals	1
7	3234-12	Screw, whizlock 3/8-16x3/4	8	41	1-809062	Bolt, .500 x 1.75(shoulder)	1
8	323-6	Screw, 3/8-16 x 1	8	42	302-40	Zerk.....	1
9	98-5975	Washer, 3/8 spring disc	8	43	1-322108	Bellcrank assy. w/zerk	1
10	103-2289-01	Mount, motor (32" & 36")..	2		1-322086-01	Bellcrank weldmt	1
	1-402062-01	Mount, motor (48").....	2	44	1-806003	Hairpin	2
11	1-523157	Washer, spacer.....	2	45	1-323172	Linkage, blade engmnt. ...	1
12	1-373034	Washer, swivel.....	2	46	3296-29	Nut, nyloc 5/16-18.....	3
13	1-303334	Washer, 5/16 spring disc..	4	47	3256-14	Washer, #10	1
14	1-603610	Washer, 7/16 spring disc..	2	48	1-322090-01	Bellcrank.....	1
15◆	103-1667	Sheave, blade drive 7.33 OD (32" & 48")	1	49	322-6	Screw, 5/16-18 x 1 1/4.....	1
◆	103-1668	Sheave, blade drive 6.71 OD (36").....	1	50	1-513051	Switch, blade engagement	1
16	1-322110	Guide, Belt.....	1	51	3296-2	Nut nyloc 10-24	1
17	1-807259	Key, 1/4 sq. x 1	2	52	1-323213	Bracket, switch	1
18	322-9	Screw, 5/16-18 x 1 3/4 (Kaw)	1	53	3290-500	Screw, 10-24 x 5/8.....	2
	33114-030	Screw, M8-1.25 x 30mm (Koh)...	1	54	321-3	Screw, 1/4-20 x 5/8.....	2
19	323-13	Screw, 3/8-16 x 2 3/4	3	55▽	3212-6	Screw, 7/16-20 x 1 1/2.....	1
20	1-603843	Idler, pulley.....	1	56	3256-24	Washer, 3/8 (SAE).....	2
21	1-603496	Bushing, idler	1	57	32128-33	Nut, whizlock 1/4-20	2
22	3231-29	Screw, 3/8-16x1-3/4 Carr..	1	58	3256-23	Washer, 5/16 SAE flat	2
23	3253-5	Lockwasher, 3/8.....	1	59	322-3	Screw, 5/16-18 x 3/4	2
24	323-12	Screw, 3/8-16 x 2-1/2	1	60	1-809069	Screw, 10-24x7/8HxSktHd	1
25	1-373034	Washer, swivel.....	1	61	1-413510	Clip, loom 1/2.....	2
26	1-513034	Bearing, pivot	2	62	103-2056	Shield, Trailing	1
27	1-602521	Arm, assy idler (w/brgs)	1	63	302-19	Zerk, 1/4-28 STRT	1
	1-602458-01	Arm, assy idler (w/o brgs) .	1	64	323-11	Screw, 3/8-16 x 2 1/4	1
28	1-603402	Spring, extension	1	65	1-323366	Split ring.....	1
29	322-5	Screw, 5/16-18 x 1	1	66	3296-39	Nut, 3/8-16 nyloc.....	1
30	1-603801	Anchor, spring.....	1	67	323-23	Screw, 3/8-16 x 4 1/2.....	1
				68	1-323365	Chain, twist link.....	1
				69	323-7	Screw, 3/8-16x 1 1/4.....	1
				70	1-633181	Plate, tapped.....	1

Exmark red touch up spray paint - P/N 1-850337

◆ Use anti-seize compound on pulley bore.

▽ Use Pro-Lock (nut type, Part no. 1-840022, 5 ml tube) on setscrew threads and on sheave retaining bolt in engine crankshaft.

ENGINE DECK GROUP



ENGINE DECK GROUP (cont.)

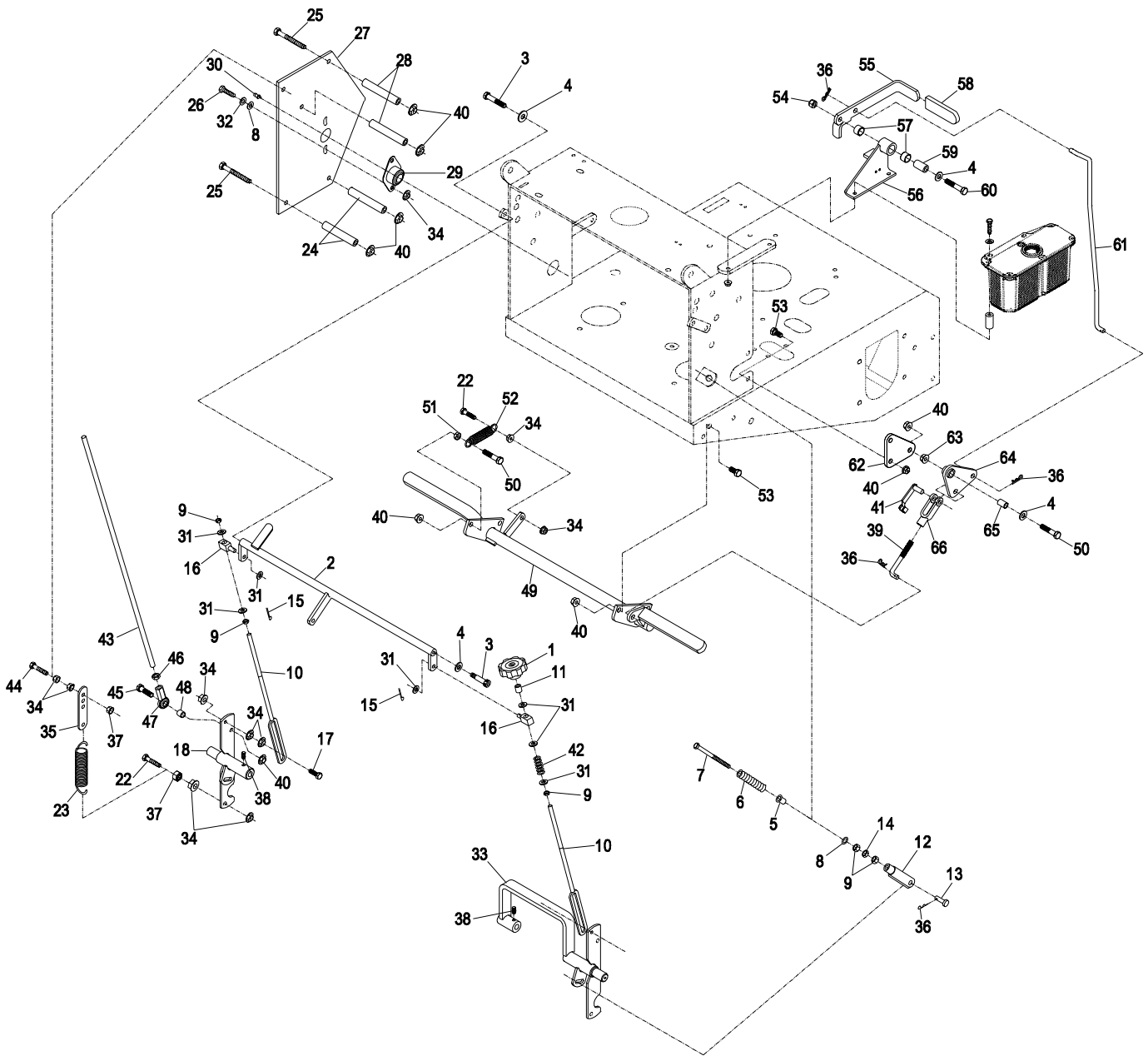
Ref. No.	Part No.	Description	Qty. Req'd.	Ref. No.	Part No.	Description	Qty. Req'd.
1	1-413151	Knob, tracking	1	36	1-806003	Hairpin	5
2	1-412203-01	Crank weldmt	1	37	3296-29	Nut, nyloc 5/16-18	4
3*	1-809056	Bolt, .375 x .375 (shoulder)	2	38*	1-803022	Setscrew, 5/16-18 x 5/8.....	2
4	3256-24	Washer, 3/8 SAE flat.....	4	39	1-413489	Linkage, lower brake	1
5	1-603735	Bushing, nylon flanged	2	40	3290-357	Nut, whizlock 3/8-16	16
6	103-0265	Spring, neutral return	2	41	103-2399	Pin, clevis spring 3/8.....	1
7	1-603737	Bolt, neutral return.....	2	42	1-323245	Spring	1
8	3256-2	Washer, 1/4(std)	6	43	103-1734	Linkage, drive	2
9	3219-2	Nut, 5/16-24	7	44	1-800016	Tapbolt, 5/16-18 x 1 1/4.....	2
10	1-413350	Rod, control arm	2	45	323-8	Screw, 3/8-16 x 1 1/2.....	2
11	1-603903	Spacer	1	46	3220-16	Nut, jam 3/8-24 LH	2
12	1-303105	Yoke, adjustable.....	2	47	103-1167	Joint, .375 LH ball end.....	2
13	1-808280	Pin, clevis 5/16-1	2	48	103-1166	Tube, pump link spacer.....	2
14	3220-2	Nut, jam 5/16-24.....	2	49	103-2299-03	Brake wldmt, 32"	1
15	3272-5	Pin, cotter 3/32 x 1/2	2		103-2085-03	Brake wldmt, 36"	1
16	1-603676	Swivel	2		103-2004-03	Brake wldmt, 48"	1
17	1-403180	Screw, 5/16-18x1 3/8 special	2	50	323-9	Screw, 3/8-16 x 1 3/4.....	2
18	103-1190-01	Arm weldmt, LH	1	51	3218-3	Nut, jam 3/8-16.....	1
19	103-1964	Hose, 24" oil drain	1	52	1-323161	Spring	1
20∇	103-1965	Valve, oil drain	1	53	323-4	Screw, 3/8-16 x 3/4.....	5
21	103-1966	Adapter, M20-2.5 / 3/8 NPT (Kaw)	1	54	3296-39	Nut, 3/8-16 nyloc	1
22	322-6	Screw, 5/16-18 x 1-1/4.....	3	55	103-3495	Lever, brake (1-412501-03) w/decal & grip	1
23	1-603693	Spring, extension	2	56	1-414504	Wldmt, bracket w/ bushings	1
24	1-323197-01	Spacer, short.....	4	57	1-413347	Sleeve, bushing.....	2
25	323-16	Screw, 3/8-16 x 4	7	58	1-303020	Grip, lever	1
26	322-3	5/16-18 x 3/4	4	59	1-413344	Bushing, pivot.....	1
27	1-413201-01	Shield, hydro control	2	60	323-10	Screw, 3/8-16 x 2.....	1
28	1-323195-01	Spacer, long	4	61	1-413496	Linkage, upper brake.....	1
29	1-633102	Bearing, flange	2	62	1-413497	Bracket, bellcrank.....	1
30	302-19	Zerk, 1/4-28.....	2	63	32128-21	Nut, hex flange lock 3/8-16	1
31	3256-23	Washer, 5/16 (SAE)	7	64	1-414508	Bellcrank, w/ bushings.....	1
32	1-805005	Lockwasher, 5/16 (heavy)	4	65	1-303548	Bushing, plastic	1
33	103-1191-01	Arm weldmt, RH.....	1	66	1-633131	Yoke, brake linkage.....	1
34	32128-20	Nut, whizlock 5/16	20				
35	1-613089	Anchor, spring	2				

Exmark red touch up spray paint - PN 1-850337

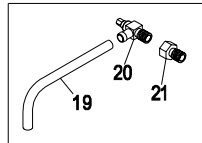
* Use Pro-Lock nut type, Part No. 1-840022 (.5 ml tube) on shoulder bolts & setscrew threads.

∇ Use a Teflon Pipe Sealant or equivalent on pipe threads.

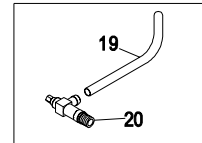
ENGINE DECK GROUP (cont.)



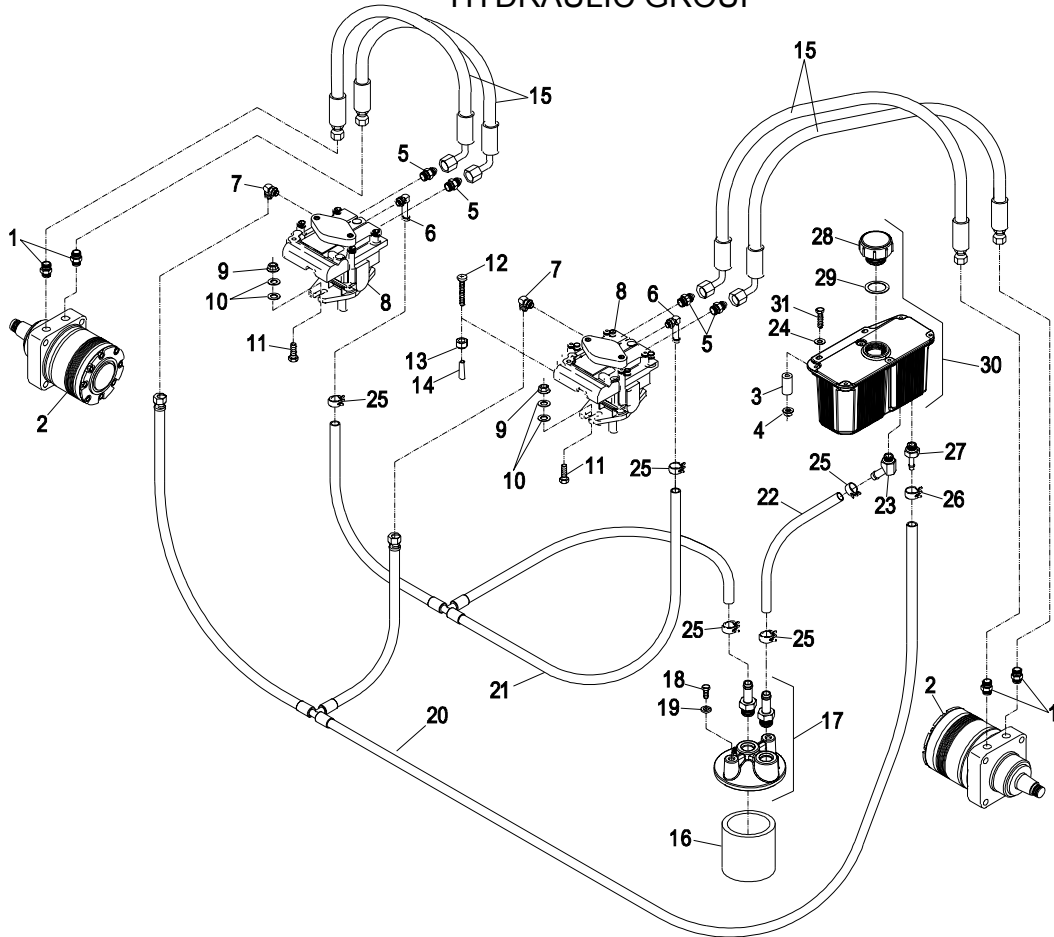
OIL DRAIN - KAWASAKI



OIL DRAIN - KOHLER



HYDRAULIC GROUP

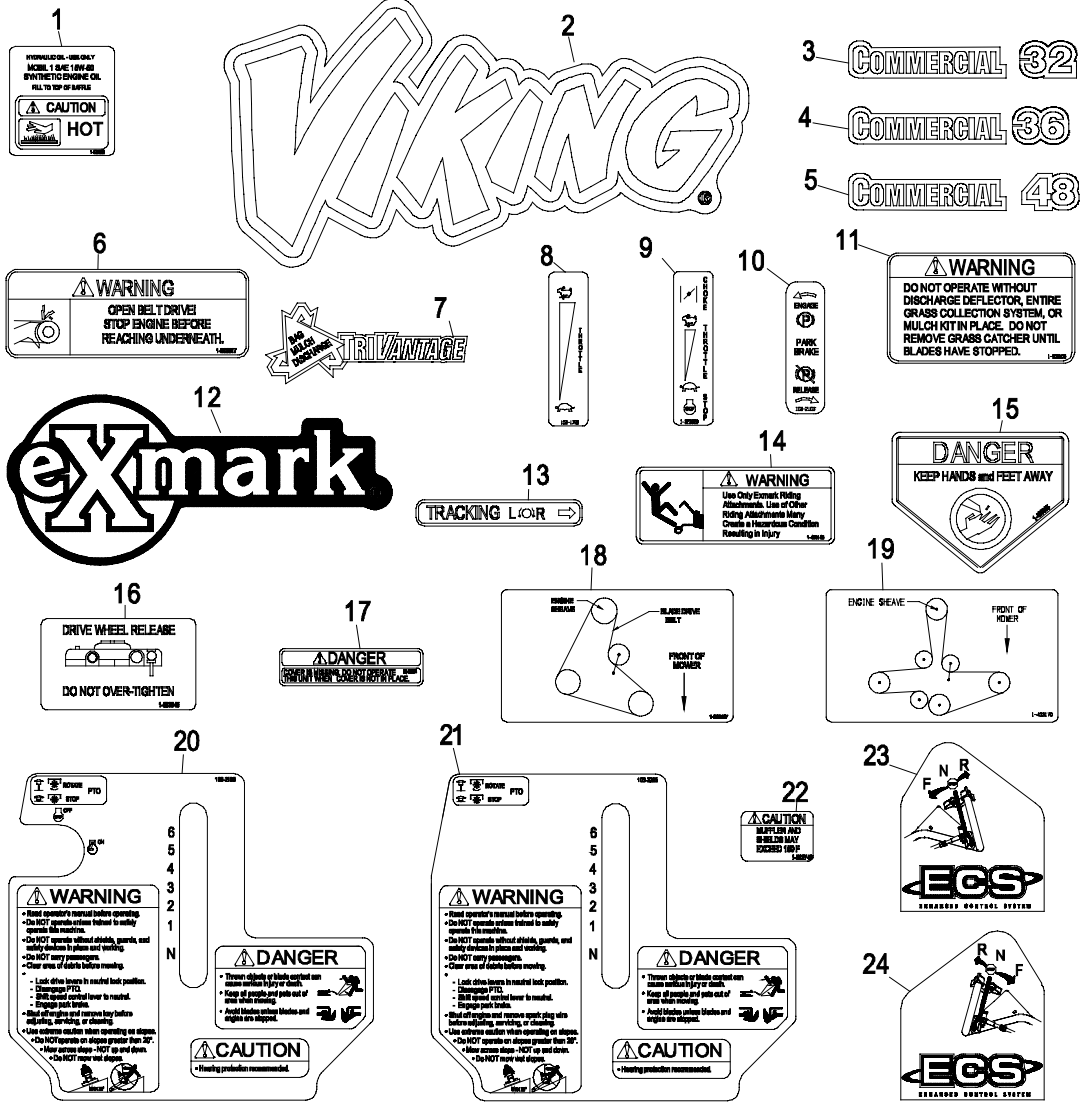


Ref. No.	Part No.	Description	Qty. Req'd.	Ref. No.	Part No.	Description	Qty. Req'd.
1	1-603991	Fitting, straight connector ..	4	15	1-613034	Hose, high pressure	4
	1-603919	Boss O-Ring	1	16	1-513211	Element, oil filter	1
	1-603992	Flare O-Ring	1	▽	1-523541	Element, oil filter(winter)	1
2	1-603718	Wheel motor	2	17	103-2889	Asm, filter head	1
	1-000138	Kit, Bearing	1		103-1912	Adapter, straight	2
	1-000119	Kit, seal	1		1-603921	O-Ring	1
3	103-2191	Spacer, hydraulic tank	2	18	321-3	Screw, 1/4-20 x 5/8.....	2
4	32128-33	Nut, whizlock 1/4-20.....	2	19	1-805004	Lockwasher	2
5	1-603990	Adapter, straight thread	4	20	103-2073	Asm, case drain hose	1
	1-603920	Boss O-Ring	1	21	103-2057	Asm, charge hose	1
	1-603992	Flare O-Ring	1	22	103-2959	Hose, charge	1
6	1-603989	Elbow, 90°	2	23	103-1807	Elbow, 45°	1
	1-603923	O-Ring.....	1		1-603921	O-Ring	1
7	1-513840	Elbow - 90°	2	24	3256-22	Washer, 1/4 SAE flat	2
	1-603921	O-Ring.....	1	25	103-1988	Clamp, hose (11/16).....	5
8	1-613042	Pump, hydro.....	2	26	103-1716	Clamp, hose (17/32).....	1
	2513018	Kit, seal overhaul	1	27	103-1801	Adapter, straight	1
9	3290-357	Nut, whizlock 3/8-16.....	4		1-603921	O-Ring	1
10	3256-3	Washer, 5/16 std	8	28	103-1948	Cap, hydraulic reservoir.....	1
11	323-7	Screw, 3/8-16 x 1-1/4.....	4	29	103-1949	Gasket, reservoir cap	1
12	1-801063	Screw, 1/4-20x2 pan head.	2	30	103-1947	Asm, reservoir w/decals	1
13	3296-42	Nut, nylock 1/4-20	2	31	321-15	Screw, 1/4-20 x 2 1/2.....	2
14	1-613073	Grip, dump valve.....	2				

Emark black touch up spray paint - gloss black

▽ Use only for operation below 32°F(0°C)

DECAL GROUP



Ref. No.	Part No.	Description	Qty. Req'd.	Ref. No.	Part No.	Description	Qty. Req'd.
1	1-523552	Decal, Hydraulic Tank.....	1	14	1-403143	Decal, Sulky Warning	1
2	103-2943	Decal, VH Model	1	15	1-403005	Decal, Danger (32" & 36")	1
3	1-323410	Decal, Commercial "32"	1		1-403005	Decal, Danger (48")	2
4	1-323411	Decal, Commercial "36"	1	16	1-603845	Decal, Drive Wheel Release	1
5	1-403131	Decal, Commercial "48"	1	17	98-5954	Decal, Missing Cover.....	1
6	1-303517	Decal, Belt Drive	1	18	1-323427	Decal, Belt routing (32" & 36")	1
7	1-303520	Decal, TriVantage	1	19	1-403170	Decal, Belt routing (48").....	1
8	103-1798	Decal, Throttle (Kaw)	1	20	103-2196	Decal, Console (Kaw).....	1
9	1-323689	Decal, Throttle/Choke/Stop(Koh)	1	21	103-2295	Decal, Console (Koh)	1
10	103-2103	Decal, Park Brake.....	1	22	1-513746	Decal, Muffler	1
11	1-303508	Decal, Discharge Warning	1	23	103-2242	Decal, LH ECS Instruction....	1
12	103-2882	Decal, Exmark Logo	1	24	103-2243	Decal, RH ECS Instruction ...	1
13	1-413214	Decal, Tracking.....	1		103-2588	Decal Kit, Viking Hydro	

ECS UPPER HANDLE and CONTROLS

Ref. No.	Part No.	Description	Qty. Req'd.	Ref. No.	Part No.	Description	Qty. Req'd.
1	1-323134	Knob, (push/pull).....	1	38	322-10	Screw, 5/16-18 x 2	2
2	3218-2	Nut, jam 5/16-18..	1	39	1-603716	Washer, friction disc	1
3	1-323143	Bushing, nylon .38 I.D.	1	40	1-323244	Washer, friction.....	2
4	1-323142	Push Nut (.50 shaft).....	1	41	103-0546-03	Wld,upper handle console .	1
5	322-9	Screw, 5/16-18 x 1 3/4	2	▲	103-2911	Asm,console w/decals	1
6	3296-29	Nut, 5/16-18 nylock	4	*	103-2912	Asm,console w/decals	1
7	1-806003	Hairpin cotter.....	3	42	103-0773	Speed shift weldmt.....	1
8	103-2193	Link, blade engagement.....	1	43	103-0423	Knob .38-16 nyloc	1
9*	103-1796	Cable, choke (Kaw).....	1	44	3219-3	Nut,reg hex 3/8-24	2
10*	103-1797-01	Bracket, choke cable (Kaw)	1	45	1-323245	Spring, compression	2
11▽	103-1566-03	Lever weldmt opc LH.....	1	46	3256-23	Washer 5/16 SAE flat	5
12◆	1-803322	Setscrew, 5/16-24 x 5/16 ...	2	47*	321-3	Screw, 1/4-20 x 5/8 (Kaw)..	12
13	1-303365	Bushing, nylon.....	2	▲	321-3	Screw, 1/4-20 x 5/8 (Koh) ..	10
14	103-0769-03	Lever axle weldmt, opc	1	48	1-323522	Rod, speed control.....	1
15	1-303363	Spring, opc extension	1	49	3220-2	Nut, 5/16-24 jam	1
16▽	103-1567-03	Lever weldmt, opc RH	1	50	1-303105	Yoke.....	1
17	1-807513	Bolt, #10-24 x 1/2 carriage. .	2	51	1-808280	Clevis pin 5/16 x 1.....	1
18	1-513592	Knob, red throttle	1	52	103-2107	Cap, fuel.....	1
19*	1-633696	Cable, throttle (Kaw)	1	53	103-2893	Asm, fuel tank	1
▲	1-323322	Cable, throttle/choke (Koh) ...	1	54▽	1-633023	Stud, fuel tank	2
20	3296-2	Nut, #10-24 nylock	2	55	1-633349	Spring, fuel tank.....	2
21	103-2194-03	Handle wld, upper ECS.....	1	56	1-805005	Washer, 5/16 hvy lock	2
22	103-0815	Grip, handle bar	2	57	322-3	Screw, 5/16-18 x 3/4	2
23	1-413152	Bearing.....	4	58◆	103-2605	Fitting,fuel blkhd w/screen	1
24	103-2466-03	Lever, drive LH.....	1	59	1-303197	Filter, fuel	1
25	103-0027	Bushing, drive lever	2	60	1-303077	Clamp, fuel line (Kaw).....	4
26	321-14	Screw,1/4-20 x 2 3/4	2		1-303077	Clamp, fuel line (Koh)	6
27*	32128-33	Nut, 1/4-20 whizlock (Kaw)	14	61	1-603955	Hose, fuel line 6"	1
▲	32128-33	Nut, 1/4-20 whizlock (Koh).	12	62	1-603770	Valve, fuel	1
28	103-0464	Pin,1/8 x 1/2 spring	2	63	1-303022	Hose, fuel line 8.5"	1
29	3256-22	Washer 1/4 SAE flat	10	64	Kawasaki PN 41019-1055	filter w/6" fuel line...1	
30	1-303435	Washer, 1/4 disc spring	6	65	3296-47	Nut, nyloc thin 5/16-18	2
31	103-1371	Thumb latch asm RH(shown)	1	66	1-603954	Hose, fuel line 13.75"	1
	103-1372	Thumb latch asm LH.....	1	67	103-2513	Asm, Drive Lever RH	1
32◆	103-0235	Screw, 1/4-20 x 1-1/8 w/nylon	2		103-2514	Asm, Drive Lever LH	1
33	103-2465-03	Lever,drive RH.....	1	68	103-2463	Joint,.31 ball end.....	2
34	3290-357	Nut, 3/8-16 whizlock.....	4	69	103-0503	Bracket,shifter slide	1
35	98-5975	Washer, 3/8 disc spring	4	70	103-0489-03	Bracket,opc axle	1
36	323-6	Screw, 3/8-16 x 1	4	71	1-603776	Hose, fuel line 2.5"	1
37	3220-3	Nut, jam 3/8-24	4				

Exmark black touch up spray paint - Gloss black

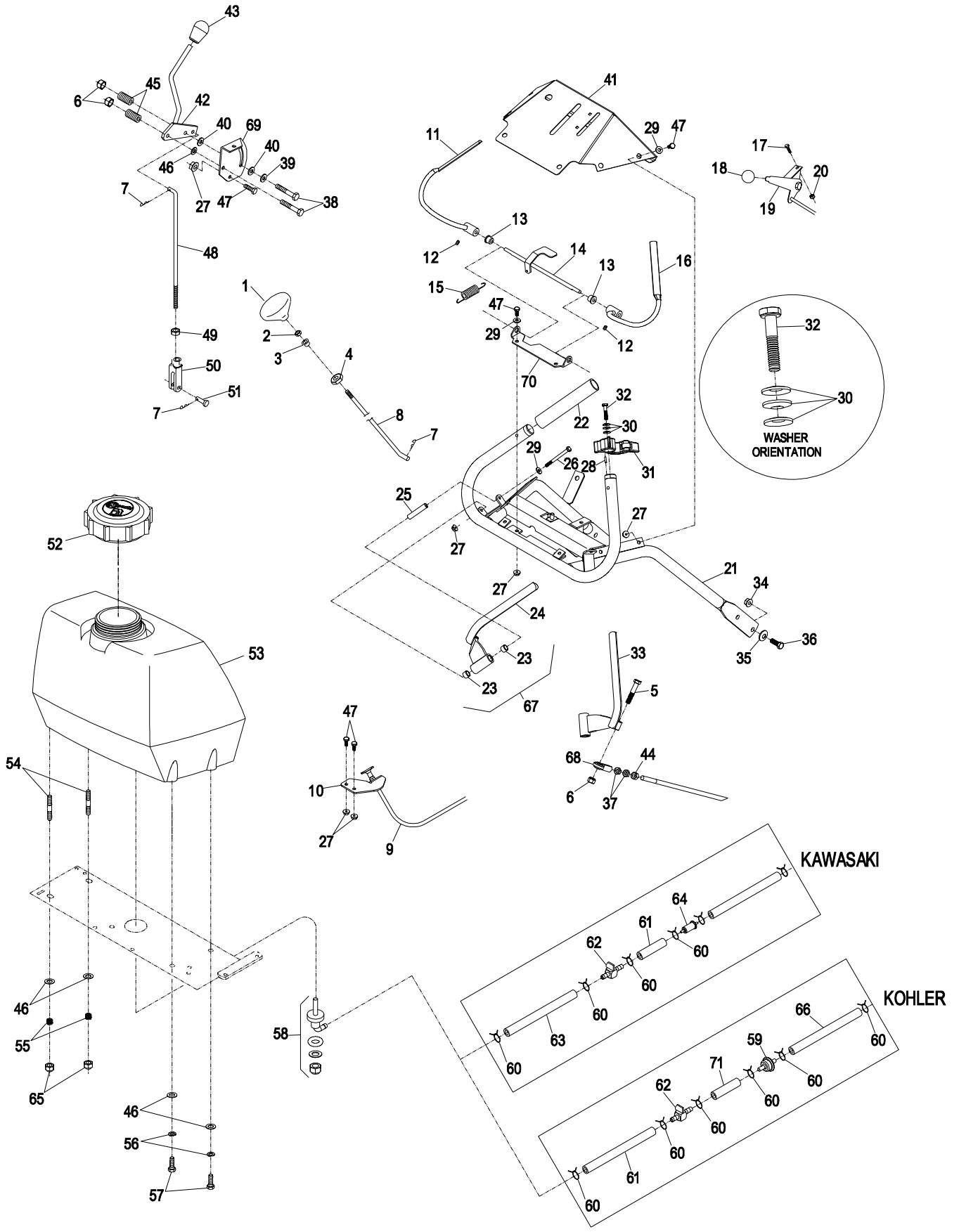
◆ Use Pro-Lock nut type, Part no. 1-840022 (.5cc tube) on setscrew threads, on thumb latch screws, and on fuel fittings.

▽ Use Pro-Lock retaining type, Part no. 1-840023 (.5cc tube) on inside of bore of OPC hub and on fuel tank studs going into tank.

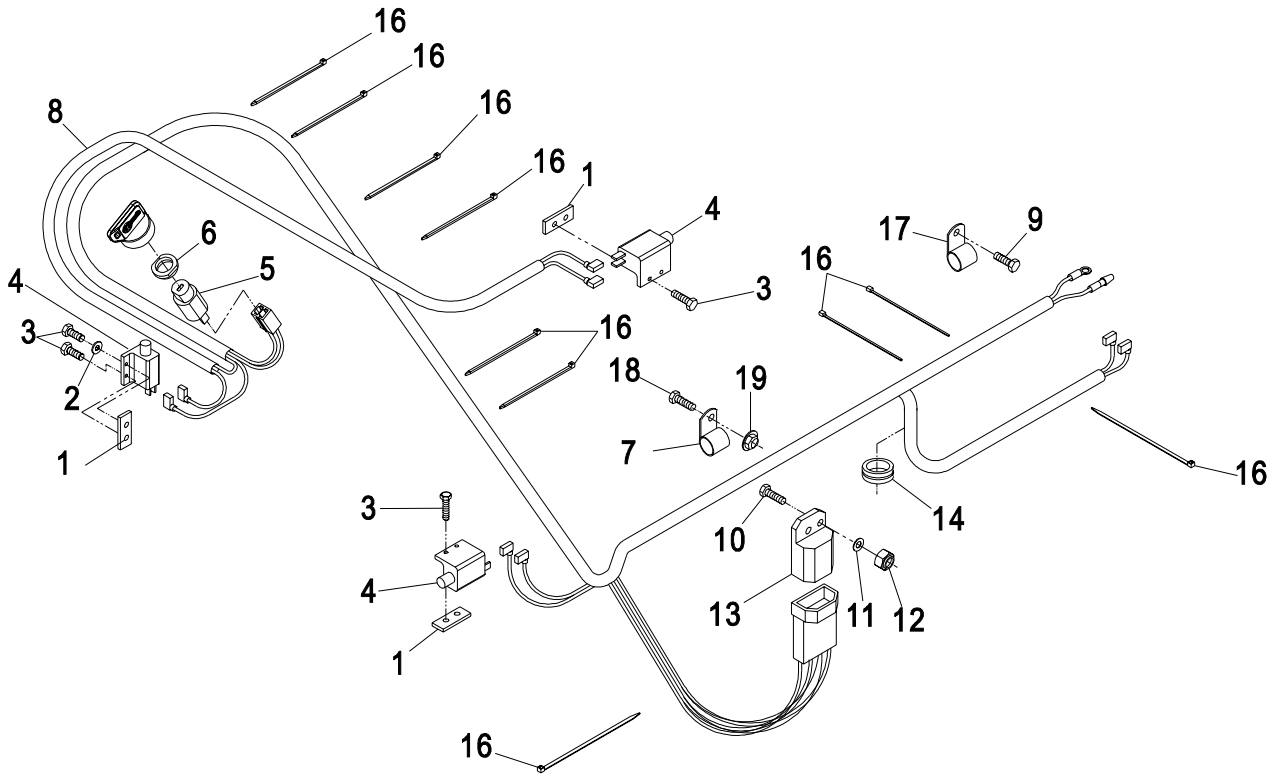
* For 15 HP Kawasaki units.

▲ For 15 HP Kohler units.

ECS UPPER HANDLE and CONTROLS



ELECTRICAL GROUP

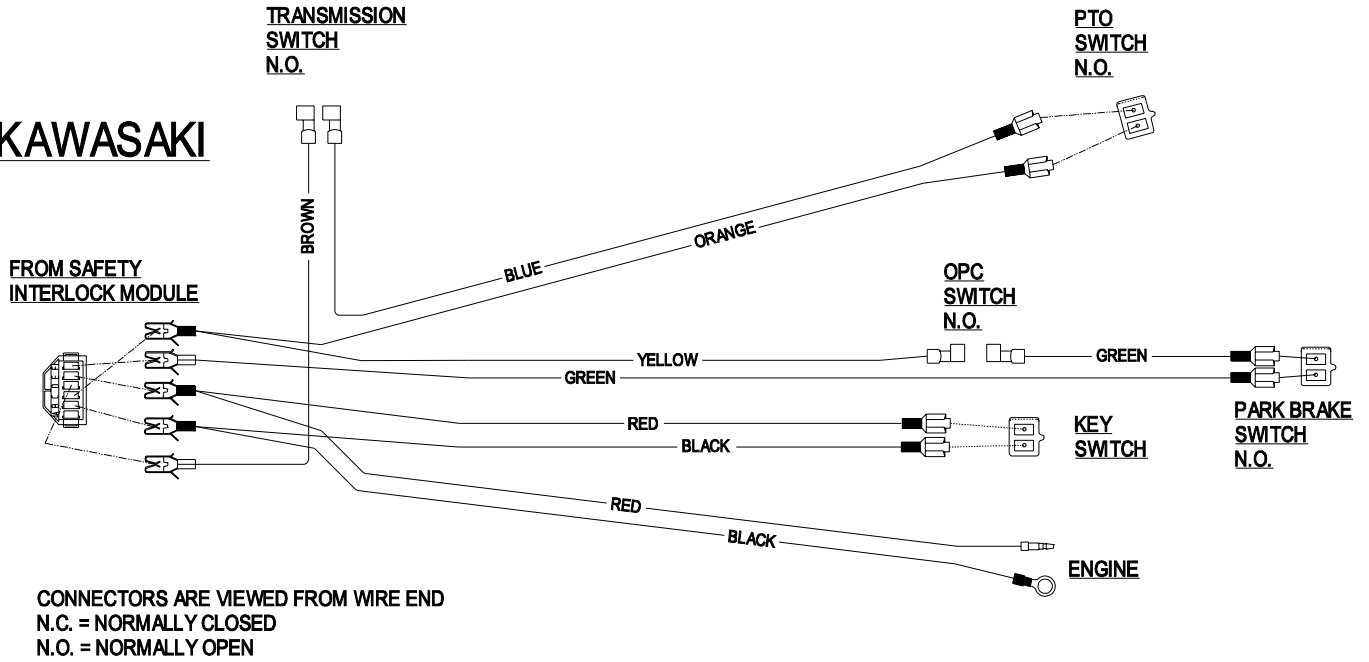


Ref. No.	Part No.	Description	Qty. Req'd.	Ref. No.	Part No.	Description	Qty. Req'd.
1	1-633181	Plate, tapped.....	3	9	33114-016	Screw, M8-1.25x16mm (Kaw)	1
2	3256-14	Washer, flat #10.....	1	10	321-4	Screw, 1/4-20 x 3/4.....	1
3	3290-500	Screw, #10-24 x 5/8.....	6	11	3256-22	Washer, 1/4 SAE flat.....	1
4	1-513051	Switch, N.O.	3	12	3296-42	Nut, nyloc 1/4-20.....	1
5	1-403121	Switch, on/off w/ keys (Kaw)	1	13	1-323430	Module, interlock.	1
	1-603511	Key, on/off (Kaw)	1	14	1-543296	Grommet	1
	103-2106	Key, Exmark logo (Kaw) ...	1	16	1-303287	Tie, plastic (small)	10
6	103-0498	Nut, ignition switch (Kaw)...	1	17	1-413510	Clip, loom 1/2 (Kaw)	1
7	1-603727	Clip, loom .56.....	1	18	321-3	Screw, 1/4-20 x 5/8.....	1
8*	103-2007	Harness, wire (Kaw).....	1	19	32128-33	Nut, whizlock 1/4-20	1
*	103-2286	Harness, wire (Koh)	1	20			

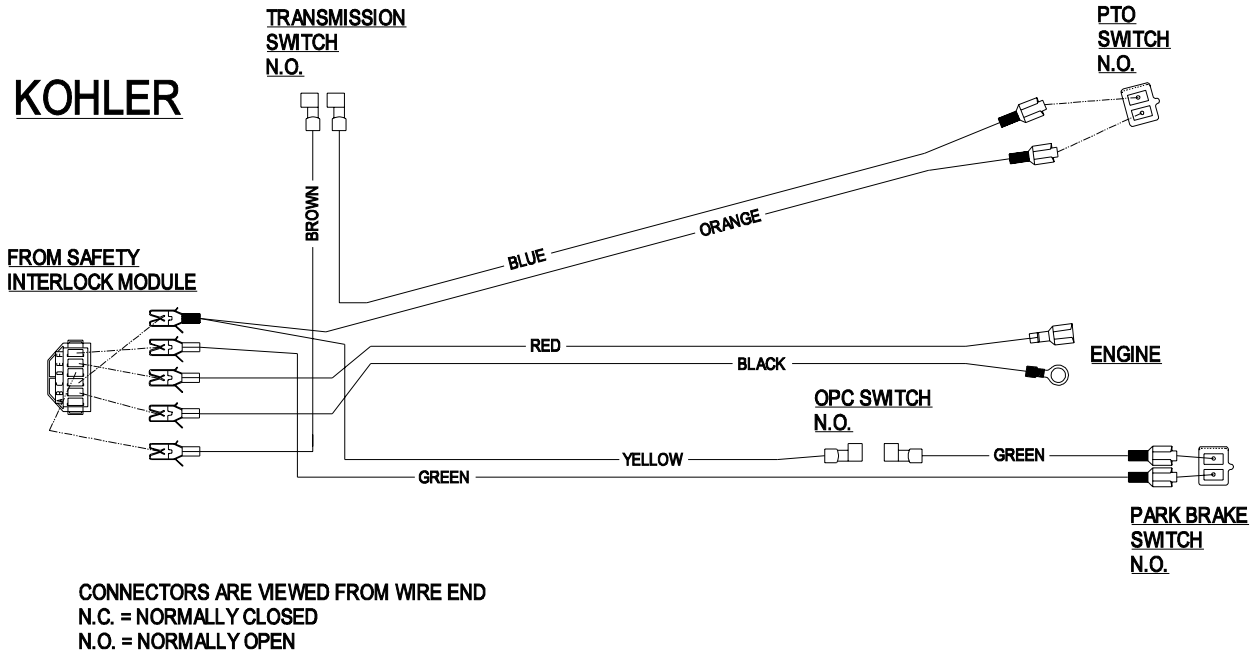
* Use dielectric grease on all wiring harness connectors.

WIRING DIAGRAMS

KAWASAKI



KOHLER



NOTES

**SEE EXMARK'S COMPLETE
LINE OF PRODUCTS FOR TURF CARE**

LAZER Z[®]

LAZER Z[®] HP

LAZER Z[®] XP

TURF RANGER[®]

TURF TRACER[®]

TURF TRACER[®] HP

VIKING HYDRO

METRO[®]

METRO[®] HP

SELF STEERING SULKY

ULTRA VAC[™]

ULTRA VAC[™] QDS

GRASS CATCHER

MICRO-MULCH[™] ACCESSORY

©1997 – 2002
EXMARK MFG. CO. INC.
INDUSTRIAL PARK BOX 808
BEATRICE, NE 68310
ALL RIGHTS RESERVED

PART NO. 103-3636
(402) 223-6300
FAX (402) 223-5489

PRINTED IN U.S.A.

